



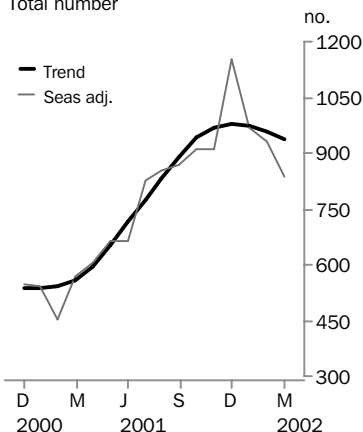
BUILDING APPROVALS

SOUTH
AUSTRALIA

EMBARGO: 11:30AM (CANBERRA TIME) THURS 9 MAY 2002

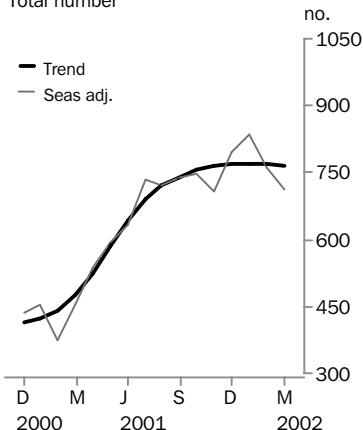
Dwelling units approved

Total number



Private sector houses approved

Total number



MARCH KEY FIGURES

| Dwelling units approved | Jan 2002 | Feb 2002 | Mar 2002 |
|-------------------------|----------|----------|----------|
| Original | 764 | 971 | 904 |
| Seasonally adjusted | 971 | 933 | 836 |
| Trend | 975 | 958 | 935 |

| | % change Dec 2001 to Jan 2002 | % change Jan 2002 to Feb 2002 | % change Feb 2002 to Mar 2002 |
|-------------------------|-------------------------------------|-------------------------------------|-------------------------------------|
| Dwelling units approved | | | |
| Original | -21.1 | 27.1 | -6.9 |
| Seasonally adjusted | -15.9 | -4.0 | -10.3 |
| Trend | -0.5 | -1.7 | -2.5 |

MARCH KEY POINTS

TREND ESTIMATES

- The trend estimate for total dwelling units approved fell 0.5%, 1.7% and 2.5% in the three months of the March 2002 quarter. This follows fifteen consecutive months of growth in the trend series to December 2001.
- Following a 0.3% increase in January 2002, the trend estimate for private sector houses fell 0.2% and 0.8% in February and March 2002 respectively.

SEASONALLY ADJUSTED ESTIMATES

- The seasonally adjusted estimates for total dwelling units approved fell to 836 in March 2002. The estimates for the months of the March 2002 quarter are all more than 46% above the estimates for the same months in 2001.
- The seasonally adjusted estimate for private sector houses fell 9.1% and 6.4% in February and March 2002, following a 4.8% rise in the estimate for January 2002.

ORIGINAL ESTIMATES

- In original terms the total number of dwelling units approved in the March 2002 quarter was 2,639. This is 5.9% lower than the total number approved in the December quarter 2001.
- The value of total building approved fell 1.3% to \$530.3m when compared with the December 2001 quarter. The value of residential building fell 6.0% to \$333.7m, while non-residential building rose 7.9% to \$196.5m.

- For further information about these and related statistics, contact Andrea Woods on Adelaide 08 8237 7350, or the National Information and Referral Service on 1300 135 070.

NOTES

FORTHCOMING ISSUES

| ISSUE | RELEASE DATE |
|----------------|-----------------|
| June 2002 | 6 August 2002 |
| September 2002 | 7 November 2002 |

CHANGES IN THIS ISSUE

There are no changes in this issue.

DATA NOTES

A special article on 'Average Value of New Houses' in the years 1987-88 to 2000-01 was included in the March 2002 issue of *'Building Approvals Australia'* (ABS Cat. no. 8731.0). This article is available from the ABS website at www.abs.gov.au. Go to the 'Australia Now' tab on the home page then select 'Construction'.

Information about ABS Building and Construction statistics and other related data is now available from the 'Building and Construction Theme Page' on the ABS website (click on the 'Themes' button and then click on 'Building and Construction'). The theme page includes information about:

- the Building and Construction Program's major papers and publications (electronic and hardcopy) and contact details;
- each of our major data collections, and examples of uses of building and construction statistics;
- issues of importance to providers and clients, including publication timetables;
- help for providers, including contact details and the survey dispatch timetables;
- alternative sources of Australian building and construction data.

REVISIONS THIS QUARTER

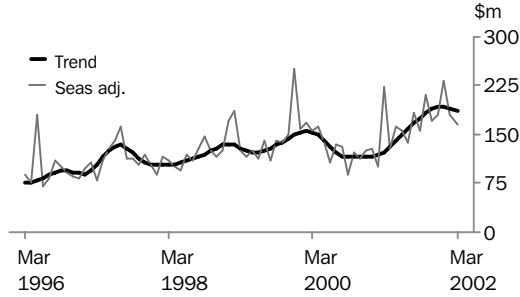
There are no significant revisions this quarter.

Steve Crabb
Regional Director, South Australia

VALUE OF BUILDING APPROVED

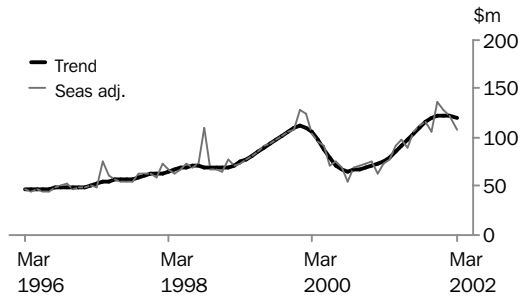
VALUE OF TOTAL BUILDING

After increasing for twelve consecutive months, the trend estimate for the value of total building approved has fallen in the last three months.



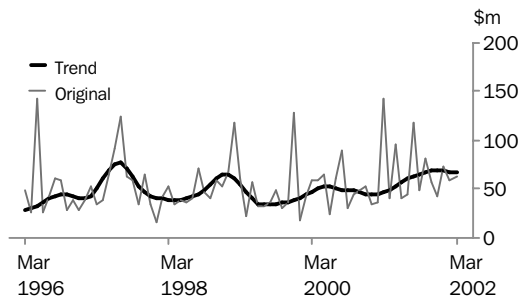
VALUE OF RESIDENTIAL BUILDING

The trend estimate for the value of residential building has fallen for the last two months following sixteen consecutive months of growth.



VALUE OF NON-RESIDENTIAL BUILDING

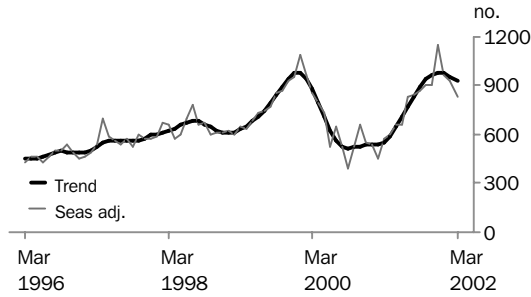
The trend estimate for the value of non-residential building approved fell for the last three months following eleven months of growth.



DWELLINGS APPROVED

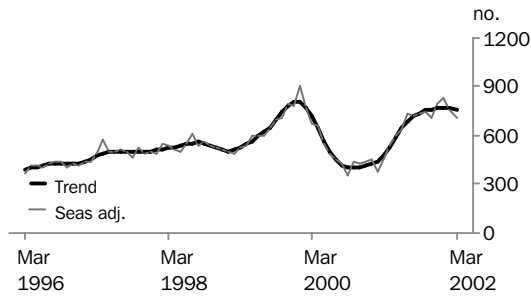
TOTAL DWELLING UNITS

The trend estimate for total dwelling units approved has fallen for the last three months following fifteen consecutive months of growth.



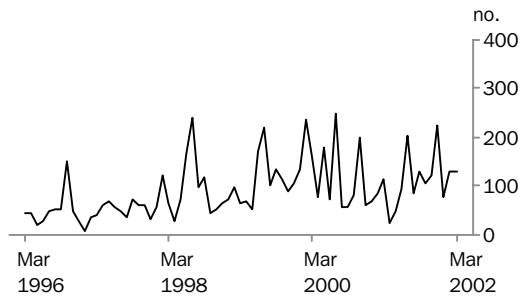
PRIVATE SECTOR HOUSES

After fifteen months of growth, the trend estimate for private sector houses approved has fallen in the last two months.



OTHER DWELLING (ORIGINAL)

The number of other dwellings approved in the March 2002 quarter was 25.2% lower than the previous quarter.



WHAT IF...? REVISIONS TO TREND ESTIMATES

EFFECT OF NEW SEASONALLY ADJUSTED ESTIMATES ON TREND ESTIMATES

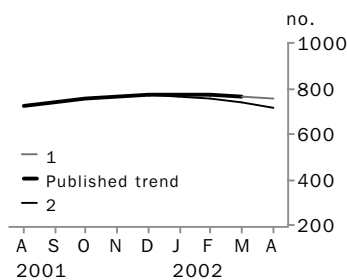
Readers should exercise care when interpreting trend estimates. The last six trend estimates, in particular, are likely to be revised when new seasonally adjusted estimates become available.

TREND REVISIONS

Generally, the greater the volatility of the original series, the larger the size of the revisions to trend estimates. Analysis of the building approval original series has shown that they can be revised substantially. As a result, some months can elapse before turning points in the trend series are reliably identified.

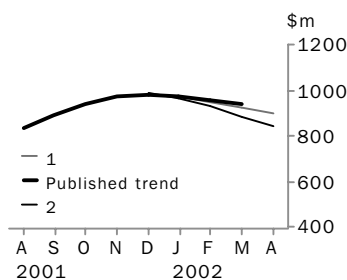
The graphs and tables which follow present the effect of two possible scenarios on the previous trend estimates: that the April seasonally adjusted estimate is higher than the March estimate by 7% for the number of private sector houses approved and 9% for total dwelling units approved; and that the April seasonally adjusted estimate is lower than the March estimate by 7% for the number of private sector houses approved and 9% for total dwelling units approved. These percentages were chosen because they represent the average absolute monthly percentage change for these series over the last ten years.

PRIVATE SECTOR HOUSES



| | WHAT IF NEXT MONTH'S SEASONALLY ADJUSTED ESTIMATE: | | | | | |
|---------------|--|----------|--|----------|--|----------|
| | TREND AS PUBLISHED | | 1 <i>rises by 7% on Mar 2002</i> | | 2 <i>falls by 7% on Mar 2002</i> | |
| | no. | % change | no. | % change | no. | % change |
| November 2001 | 763 | 1.2 | 764 | 1.2 | 768 | 1.4 |
| December 2001 | 769 | 0.8 | 769 | 0.6 | 771 | 0.4 |
| January 2002 | 771 | 0.3 | 771 | 0.2 | 766 | -0.5 |
| February 2002 | 770 | -0.2 | 769 | -0.3 | 754 | -1.6 |
| March 2002 | 764 | -0.8 | 763 | -0.8 | 735 | -2.5 |
| April 2002 | n.y.a. | n.y.a. | 756 | -0.9 | 715 | -2.8 |

TOTAL DWELLING UNITS



| | WHAT IF NEXT MONTH'S SEASONALLY ADJUSTED ESTIMATE: | | | | | |
|---------------|--|----------|--|----------|--|----------|
| | TREND AS PUBLISHED | | 1 <i>rises by 9% on Mar 2002</i> | | 2 <i>falls by 9% on Mar 2002</i> | |
| | no. | % change | no. | % change | no. | % change |
| November 2001 | 970 | 3.1 | 974 | 3.3 | 978 | 3.5 |
| December 2001 | 979 | 1.0 | 981 | 0.8 | 984 | 0.5 |
| January 2002 | 975 | -0.5 | 972 | -1.0 | 965 | -1.9 |
| February 2002 | 958 | -1.7 | 951 | -2.1 | 930 | -3.7 |
| March 2002 | 935 | -2.5 | 926 | -2.7 | 885 | -4.8 |
| April 2002 | n.y.a. | n.y.a. | 899 | -2.9 | 838 | -5.3 |

DWELLING UNITS APPROVED

| Month | HOUSES..... | | OTHER DWELLINGS..... | | TOTAL DWELLING UNITS.... | |
|---------------------|-----------------------|--------------|-----------------------|--------------|--------------------------|--------------|
| | <i>Private sector</i> | <i>Total</i> | <i>Private sector</i> | <i>Total</i> | <i>Private sector</i> | <i>Total</i> |
| | <i>no.</i> | <i>no.</i> | <i>no.</i> | <i>no.</i> | <i>no.</i> | <i>no.</i> |
| ORIGINAL | | | | | | |
| 2001 | | | | | | |
| January | 364 | 364 | 59 | 68 | 423 | 432 |
| February | 380 | 385 | 84 | 84 | 464 | 469 |
| March | 516 | 522 | 113 | 113 | 629 | 635 |
| April | 475 | 492 | 21 | 23 | 496 | 515 |
| May | 655 | 659 | 50 | 50 | 705 | 709 |
| June | 641 | 644 | 92 | 92 | 733 | 736 |
| July | 765 | 771 | 201 | 204 | 966 | 975 |
| August | 734 | 741 | 74 | 84 | 808 | 825 |
| September | 712 | 731 | 128 | 132 | 840 | 863 |
| October | 778 | 797 | 99 | 107 | 877 | 904 |
| November | 764 | 810 | 117 | 121 | 881 | 931 |
| December | 698 | 744 | 224 | 224 | 922 | 968 |
| 2002 | | | | | | |
| January | 667 | 688 | 74 | 76 | 741 | 764 |
| February | 770 | 839 | 129 | 132 | 899 | 971 |
| March | 756 | 774 | 130 | 130 | 886 | 904 |
| SEASONALLY ADJUSTED | | | | | | |
| 2001 | | | | | | |
| January | 453 | 453 | n.a. | n.a. | 531 | 540 |
| February | 375 | 380 | n.a. | n.a. | 447 | 452 |
| March | 453 | 459 | n.a. | n.a. | 565 | 571 |
| April | 538 | 555 | n.a. | n.a. | 586 | 605 |
| May | 594 | 598 | n.a. | n.a. | 660 | 664 |
| June | 632 | 635 | n.a. | n.a. | 659 | 662 |
| July | 736 | 742 | n.a. | n.a. | 818 | 827 |
| August | 721 | 728 | n.a. | n.a. | 834 | 851 |
| September | 740 | 759 | n.a. | n.a. | 848 | 871 |
| October | 748 | 767 | n.a. | n.a. | 884 | 911 |
| November | 707 | 753 | n.a. | n.a. | 860 | 910 |
| December | 797 | 843 | n.a. | n.a. | 1 109 | 1 155 |
| 2002 | | | | | | |
| January | 836 | 857 | n.a. | n.a. | 948 | 971 |
| February | 759 | 828 | n.a. | n.a. | 861 | 933 |
| March | 711 | 729 | n.a. | n.a. | 818 | 836 |
| TREND ESTIMATES | | | | | | |
| 2001 | | | | | | |
| January | 423 | 429 | n.a. | n.a. | 528 | 538 |
| February | 442 | 449 | n.a. | n.a. | 533 | 543 |
| March | 475 | 482 | n.a. | n.a. | 549 | 557 |
| April | 525 | 532 | n.a. | n.a. | 585 | 593 |
| May | 586 | 592 | n.a. | n.a. | 644 | 651 |
| June | 644 | 650 | n.a. | n.a. | 706 | 714 |
| July | 690 | 698 | n.a. | n.a. | 762 | 774 |
| August | 720 | 731 | n.a. | n.a. | 817 | 833 |
| September | 740 | 758 | n.a. | n.a. | 868 | 892 |
| October | 754 | 780 | n.a. | n.a. | 909 | 940 |
| November | 763 | 796 | n.a. | n.a. | 933 | 970 |
| December | 769 | 807 | n.a. | n.a. | 938 | 979 |
| 2002 | | | | | | |
| January | 771 | 811 | n.a. | n.a. | 933 | 975 |
| February | 770 | 811 | n.a. | n.a. | 916 | 958 |
| March | 764 | 804 | n.a. | n.a. | 894 | 935 |

DWELLING UNITS APPROVED, Percentage Change

| Month | HOUSES..... | | OTHER DWELLINGS..... | | TOTAL DWELLING UNITS... | |
|---|----------------|-------|----------------------|-------|-------------------------|-------|
| | Private sector | Total | Private sector | Total | Private sector | Total |
| ORIGINAL (% change from preceding month) | | | | | | |
| 2001 | | | | | | |
| January | -4.5 | -8.5 | 1.7 | 13.3 | -3.6 | -5.7 |
| February | 4.4 | 5.8 | 42.4 | 23.5 | 9.7 | 8.6 |
| March | 35.8 | 35.6 | 34.5 | 34.5 | 35.6 | 35.4 |
| April | -7.9 | -5.7 | -81.4 | -79.6 | -21.1 | -18.9 |
| May | 37.9 | 33.9 | 138.1 | 117.4 | 42.1 | 37.7 |
| June | -2.1 | -2.3 | 84.0 | 84.0 | 4.0 | 3.8 |
| July | 19.3 | 19.7 | 118.5 | 121.7 | 31.8 | 32.5 |
| August | -4.1 | -3.9 | -63.2 | -58.8 | -16.4 | -15.4 |
| September | -3.0 | -1.3 | 73.0 | 57.1 | 4.0 | 4.6 |
| October | 9.3 | 9.0 | -22.7 | -18.9 | 4.4 | 4.8 |
| November | -1.8 | 1.6 | 18.2 | 13.1 | 0.5 | 3.0 |
| December | -8.6 | -8.1 | 91.5 | 85.1 | 4.7 | 4.0 |
| 2002 | | | | | | |
| January | -4.4 | -7.5 | -67.0 | -66.1 | -19.6 | -21.1 |
| February | 15.4 | 21.9 | 74.3 | 73.7 | 21.3 | 27.1 |
| March | -1.8 | -7.7 | 0.8 | -1.5 | -1.4 | -6.9 |
| SEASONALLY ADJUSTED (% change from preceding month) | | | | | | |
| 2001 | | | | | | |
| January | 3.7 | 0.0 | n.a. | n.a. | 0.2 | -1.7 |
| February | -17.1 | -16.1 | n.a. | n.a. | -15.8 | -16.2 |
| March | 20.7 | 20.8 | n.a. | n.a. | 26.4 | 26.5 |
| April | 18.8 | 20.9 | n.a. | n.a. | 3.7 | 5.8 |
| May | 10.3 | 7.7 | n.a. | n.a. | 12.6 | 9.8 |
| June | 6.4 | 6.2 | n.a. | n.a. | -0.2 | -0.4 |
| July | 16.6 | 16.9 | n.a. | n.a. | 24.1 | 25.0 |
| August | -2.1 | -1.9 | n.a. | n.a. | 2.0 | 2.9 |
| September | 2.6 | 4.3 | n.a. | n.a. | 1.7 | 2.4 |
| October | 1.0 | 1.1 | n.a. | n.a. | 4.2 | 4.6 |
| November | -5.4 | -1.8 | n.a. | n.a. | -2.7 | -0.1 |
| December | 12.8 | 12.0 | n.a. | n.a. | 29.0 | 27.0 |
| 2002 | | | | | | |
| January | 4.8 | 1.7 | n.a. | n.a. | -14.5 | -15.9 |
| February | -9.1 | -3.4 | n.a. | n.a. | -9.2 | -4.0 |
| March | -6.4 | -12.0 | n.a. | n.a. | -5.0 | -10.3 |
| TREND ESTIMATES (% change from preceding month) | | | | | | |
| 2001 | | | | | | |
| January | 2.2 | 2.4 | n.a. | n.a. | 0.0 | 0.2 |
| February | 4.5 | 4.7 | n.a. | n.a. | 0.9 | 0.9 |
| March | 7.6 | 7.3 | n.a. | n.a. | 3.0 | 2.7 |
| April | 10.3 | 10.4 | n.a. | n.a. | 6.6 | 6.4 |
| May | 11.6 | 11.3 | n.a. | n.a. | 10.1 | 9.8 |
| June | 10.0 | 9.8 | n.a. | n.a. | 9.6 | 9.7 |
| July | 7.1 | 7.4 | n.a. | n.a. | 7.9 | 8.4 |
| August | 4.4 | 4.7 | n.a. | n.a. | 7.2 | 7.6 |
| September | 2.8 | 3.7 | n.a. | n.a. | 6.2 | 7.0 |
| October | 1.8 | 2.9 | n.a. | n.a. | 4.7 | 5.4 |
| November | 1.2 | 2.1 | n.a. | n.a. | 2.6 | 3.1 |
| December | 0.8 | 1.4 | n.a. | n.a. | 0.5 | 1.0 |
| 2002 | | | | | | |
| January | 0.3 | 0.5 | n.a. | n.a. | -0.5 | -0.5 |
| February | -0.2 | 0.0 | n.a. | n.a. | -1.8 | -1.7 |
| March | -0.8 | -0.9 | n.a. | n.a. | -2.4 | -2.5 |

VALUE OF BUILDING APPROVED

| Month | New residential building \$m | Alterations and additions to residential buildings(a) \$m | Total residential building \$m | Non-residential building \$m | Total building \$m |
|---------------------|---------------------------------|--|-----------------------------------|---------------------------------|-----------------------|
| ORIGINAL | | | | | |
| 2001 | | | | | |
| January | 46.5 | 13.5 | 60.0 | 35.2 | 95.3 |
| February | 50.4 | 13.8 | 64.2 | 36.6 | 100.9 |
| March | 67.2 | 14.0 | 81.2 | 141.9 | 223.2 |
| April | 56.3 | 10.8 | 67.1 | 40.5 | 107.6 |
| May | 79.3 | 16.9 | 96.1 | 95.7 | 191.8 |
| June | 84.2 | 14.3 | 98.5 | 40.8 | 139.3 |
| July | 98.3 | 15.9 | 114.2 | 45.9 | 160.1 |
| August | 86.3 | 17.0 | 103.3 | 118.4 | 221.7 |
| September | 95.9 | 14.5 | 110.3 | 48.3 | 158.6 |
| October | 98.0 | 19.6 | 117.7 | 81.9 | 199.6 |
| November | 100.4 | 16.1 | 116.5 | 57.3 | 173.8 |
| December | 107.9 | 13.0 | 120.9 | 42.9 | 163.7 |
| 2002 | | | | | |
| January | 86.7 | 13.2 | 99.8 | 73.0 | 172.9 |
| February | 104.8 | 17.7 | 122.6 | 59.6 | 182.2 |
| March | 97.0 | 14.3 | 111.3 | 63.9 | 175.2 |
| SEASONALLY ADJUSTED | | | | | |
| 2001 | | | | | |
| January | 60.2 | 15.7 | 75.9 | n.a. | 128.3 |
| February | 50.3 | 13.9 | 64.2 | n.a. | 99.9 |
| March | 60.6 | 13.6 | 74.2 | n.a. | 222.8 |
| April | 65.6 | 12.8 | 78.4 | n.a. | 128.9 |
| May | 75.3 | 17.0 | 92.3 | n.a. | 161.0 |
| June | 83.4 | 14.7 | 98.2 | n.a. | 155.1 |
| July | 74.1 | 15.2 | 89.3 | n.a. | 138.1 |
| August | 89.7 | 15.7 | 105.4 | n.a. | 184.3 |
| September | 99.0 | 13.8 | 112.8 | n.a. | 154.6 |
| October | 99.4 | 17.8 | 117.2 | n.a. | 209.8 |
| November | 91.7 | 15.1 | 106.8 | n.a. | 172.9 |
| December | 122.8 | 14.8 | 137.6 | n.a. | 180.4 |
| 2002 | | | | | |
| January | 113.1 | 15.2 | 128.3 | n.a. | 231.3 |
| February | 104.5 | 17.8 | 122.3 | n.a. | 180.5 |
| March | 94.0 | 13.3 | 107.3 | n.a. | 166.5 |
| TREND ESTIMATES | | | | | |
| 2001 | | | | | |
| January | 56.9 | 14.0 | 70.9 | 44.8 | 115.7 |
| February | 59.0 | 14.1 | 73.2 | 45.4 | 118.5 |
| March | 61.9 | 14.3 | 76.2 | 47.3 | 123.6 |
| April | 66.0 | 14.5 | 80.5 | 50.0 | 130.5 |
| May | 71.7 | 14.8 | 86.5 | 53.5 | 140.0 |
| June | 77.6 | 15.0 | 92.7 | 57.9 | 150.6 |
| July | 83.2 | 15.3 | 98.5 | 61.3 | 159.8 |
| August | 88.7 | 15.5 | 104.2 | 63.5 | 167.7 |
| September | 94.5 | 15.5 | 110.0 | 65.4 | 175.4 |
| October | 100.1 | 15.6 | 115.7 | 67.3 | 183.0 |
| November | 104.4 | 15.6 | 120.1 | 69.0 | 189.1 |
| December | 106.9 | 15.6 | 122.5 | 69.5 | 192.1 |
| 2002 | | | | | |
| January | 107.5 | 15.5 | 123.1 | 69.0 | 192.0 |
| February | 106.7 | 15.4 | 122.1 | 67.6 | 189.8 |
| March | 105.0 | 15.3 | 120.3 | 67.3 | 187.6 |

(a) Refer to Explanatory Notes paragraph 16.

VALUE OF BUILDING APPROVED, Percentage Change

| Month | New residential building | Alterations and additions to residential buildings(a) | Total residential building | Non-residential building | Total building |
|---|--------------------------|---|----------------------------|--------------------------|----------------|
| ORIGINAL (% change from preceding month) | | | | | |
| 2001 | | | | | |
| January | -5.8 | 12.1 | -2.3 | -33.1 | -16.5 |
| February | 8.5 | 1.7 | 7.0 | 4.0 | 5.9 |
| March | 33.2 | 2.1 | 26.5 | 287.3 | 121.3 |
| April | -16.3 | -23.1 | -17.5 | -71.5 | -51.8 |
| May | 40.9 | 56.5 | 43.4 | 136.3 | 78.4 |
| June | 6.3 | -15.5 | 2.4 | -57.3 | -27.4 |
| July | 16.8 | 11.4 | 16.0 | 12.4 | 14.9 |
| August | -12.2 | 6.7 | -9.6 | 158.0 | 38.4 |
| September | 11.0 | -14.8 | 6.8 | -59.2 | -28.4 |
| October | 2.2 | 35.8 | 6.6 | 69.6 | 25.8 |
| November | 2.5 | -18.0 | -1.0 | -30.1 | -12.9 |
| December | 7.4 | -19.2 | 3.7 | -25.2 | -5.8 |
| 2002 | | | | | |
| January | -19.6 | 1.2 | -17.4 | 70.4 | 5.6 |
| February | 20.9 | 34.8 | 22.7 | -18.3 | 5.4 |
| March | -7.4 | -19.5 | -9.2 | 7.1 | -3.8 |
| SEASONALLY ADJUSTED (% change from preceding month) | | | | | |
| 2001 | | | | | |
| January | 1.7 | 17.2 | 4.6 | n.a. | 1.4 |
| February | -16.5 | -11.4 | -15.5 | n.a. | -22.1 |
| March | 20.6 | -2.3 | 15.6 | n.a. | 123.1 |
| April | 8.1 | -5.4 | 5.7 | n.a. | -42.2 |
| May | 14.9 | 32.5 | 17.8 | n.a. | 24.9 |
| June | 10.7 | -13.4 | 6.3 | n.a. | -3.6 |
| July | -11.2 | 3.3 | -9.0 | n.a. | -11.0 |
| August | 21.0 | 3.1 | 18.0 | n.a. | 33.4 |
| September | 10.4 | -11.7 | 7.1 | n.a. | -16.2 |
| October | 0.4 | 28.4 | 3.8 | n.a. | 35.8 |
| November | -7.7 | -14.9 | -8.8 | n.a. | -17.6 |
| December | 33.9 | -2.2 | 28.8 | n.a. | 4.3 |
| 2002 | | | | | |
| January | -7.9 | 2.9 | -6.7 | n.a. | 28.2 |
| February | -7.6 | 17.1 | -4.7 | n.a. | -22.0 |
| March | -10.0 | -25.2 | -12.2 | n.a. | -7.7 |
| TREND ESTIMATES (% change from preceding month) | | | | | |
| 2001 | | | | | |
| January | 2.3 | 2.2 | 2.3 | -1.5 | 0.8 |
| February | 3.8 | 1.1 | 3.3 | 1.2 | 2.5 |
| March | 4.8 | 1.4 | 4.2 | 4.4 | 4.3 |
| April | 6.6 | 1.4 | 5.6 | 5.5 | 5.6 |
| May | 8.7 | 1.5 | 7.4 | 7.2 | 7.3 |
| June | 8.3 | 1.9 | 7.2 | 8.2 | 7.6 |
| July | 7.2 | 1.9 | 6.3 | 5.8 | 6.1 |
| August | 6.6 | 1.0 | 5.7 | 3.6 | 4.9 |
| September | 6.6 | 0.3 | 5.6 | 2.9 | 4.6 |
| October | 5.9 | 0.2 | 5.1 | 3.0 | 4.3 |
| November | 4.3 | 0.4 | 3.8 | 2.5 | 3.3 |
| December | 2.4 | 0.0 | 2.1 | 0.7 | 1.6 |
| 2002 | | | | | |
| January | 0.6 | -0.6 | 0.4 | -0.8 | 0.0 |
| February | -0.7 | -0.9 | -0.8 | -1.9 | -1.2 |
| March | -1.6 | -0.9 | -1.5 | -0.4 | -1.2 |

(a) Refer to Explanatory Notes paragraph 16.

DWELLING UNITS APPROVED, Private and Public Sector: Original

| Period | New houses | New other residential building | Alterations and additions to residential buildings | Conversion(a) | Non-residential building(a) | Total dwelling units |
|-------------------------|------------|--------------------------------|--|---------------|-----------------------------|----------------------|
| PRIVATE SECTOR (Number) | | | | | | |
| 1998-1999 | 6 555 | 1 012 | 11 | 118 | 1 | 7 697 |
| 1999-2000 | 8 287 | 1 457 | 18 | 145 | 8 | 9 915 |
| 2000-2001 | 5 544 | 1 075 | 7 | 24 | 4 | 6 654 |
| 2001 | | | | | | |
| March | 516 | 110 | 3 | 0 | 0 | 629 |
| April | 475 | 19 | 2 | 0 | 0 | 496 |
| May | 655 | 49 | 0 | 0 | 1 | 705 |
| June | 640 | 92 | 0 | 1 | 0 | 733 |
| July | 763 | 196 | 5 | 2 | 0 | 966 |
| August | 734 | 69 | 1 | 3 | 1 | 808 |
| September | 711 | 106 | 0 | 9 | 14 | 840 |
| October | 777 | 99 | 0 | 1 | 0 | 877 |
| November | 764 | 116 | 1 | 0 | 0 | 881 |
| December | 698 | 224 | 0 | 0 | 0 | 922 |
| 2002 | | | | | | |
| January | 666 | 74 | 0 | 1 | 0 | 741 |
| February | 767 | 128 | 0 | 3 | 1 | 899 |
| March | 756 | 130 | 0 | 0 | 0 | 886 |
| PUBLIC SECTOR (Number) | | | | | | |
| 1998-1999 | 206 | 22 | 3 | 0 | 0 | 231 |
| 1999-2000 | 102 | 7 | 0 | 0 | 0 | 109 |
| 2000-2001 | 89 | 23 | 1 | 3 | 0 | 116 |
| 2001 | | | | | | |
| March | 6 | 0 | 0 | 0 | 0 | 6 |
| April | 17 | 2 | 0 | 0 | 0 | 19 |
| May | 4 | 0 | 0 | 0 | 0 | 4 |
| June | 3 | 0 | 0 | 0 | 0 | 3 |
| July | 6 | 3 | 0 | 0 | 0 | 9 |
| August | 7 | 10 | 0 | 0 | 0 | 17 |
| September | 19 | 4 | 0 | 0 | 0 | 23 |
| October | 19 | 8 | 0 | 0 | 0 | 27 |
| November | 46 | 4 | 0 | 0 | 0 | 50 |
| December | 46 | 0 | 0 | 0 | 0 | 46 |
| 2002 | | | | | | |
| January | 21 | 2 | 0 | 0 | 0 | 23 |
| February | 69 | 3 | 0 | 0 | 0 | 72 |
| March | 18 | 0 | 0 | 0 | 0 | 18 |
| TOTAL (Number) | | | | | | |
| 1998-1999 | 6 761 | 1 034 | 14 | 118 | 1 | 7 928 |
| 1999-2000 | 8 389 | 1 464 | 18 | 145 | 8 | 10 024 |
| 2000-2001 | 5 633 | 1 098 | 8 | 27 | 4 | 6 770 |
| 2001 | | | | | | |
| March | 522 | 110 | 3 | 0 | 0 | 635 |
| April | 492 | 21 | 2 | 0 | 0 | 515 |
| May | 659 | 49 | 0 | 0 | 1 | 709 |
| June | 643 | 92 | 0 | 1 | 0 | 736 |
| July | 769 | 199 | 5 | 2 | 0 | 975 |
| August | 741 | 79 | 1 | 3 | 1 | 825 |
| September | 730 | 110 | 0 | 9 | 14 | 863 |
| October | 796 | 107 | 0 | 1 | 0 | 904 |
| November | 810 | 120 | 1 | 0 | 0 | 931 |
| December | 744 | 224 | 0 | 0 | 0 | 968 |
| 2002 | | | | | | |
| January | 687 | 76 | 0 | 1 | 0 | 764 |
| February | 836 | 131 | 0 | 3 | 1 | 971 |
| March | 774 | 130 | 0 | 0 | 0 | 904 |

(a) See Glossary for definition.

VALUE OF BUILDING APPROVED, Private and Public Sector: **Original**

| Period | New houses | New other residential building | Alterations and additions creating dwellings | Alterations and additions not creating dwellings | Conversion(a) | Total residential building | Non-residential building (a) | Total building |
|-----------------------------|------------|--------------------------------|--|--|---------------|----------------------------|------------------------------|----------------|
| PRIVATE SECTOR (\$ million) | | | | | | | | |
| 1998-1999 | 624.9 | 132.6 | 0.4 | 136.5 | 4.5 | 898.9 | 443.0 | 1 341.9 |
| 1999-2000 | 838.7 | 175.3 | 1.3 | 162.3 | 18.8 | 1 196.5 | 361.8 | 1 558.3 |
| 2000-2001 | 599.6 | 125.9 | 0.3 | 147.4 | 2.4 | 875.6 | 450.3 | 1 325.9 |
| 2001 | | | | | | | | |
| March | 53.7 | 13.0 | 0.1 | 12.8 | 0.1 | 79.7 | 31.6 | 111.3 |
| April | 51.8 | 2.1 | 0.2 | 10.5 | 0.1 | 64.7 | 32.6 | 97.3 |
| May | 74.1 | 4.8 | 0.0 | 16.3 | 0.0 | 95.3 | 73.8 | 169.1 |
| June | 72.0 | 11.9 | 0.0 | 13.9 | 0.0 | 97.9 | 34.5 | 132.4 |
| July | 81.4 | 16.2 | 0.3 | 15.4 | 0.1 | 113.4 | 28.6 | 142.0 |
| August | 77.8 | 7.4 | 0.0 | 16.1 | 0.1 | 101.4 | 38.6 | 140.0 |
| September | 81.6 | 12.5 | 0.0 | 14.0 | 0.4 | 108.4 | 40.9 | 149.3 |
| October | 87.2 | 8.5 | 0.0 | 19.6 | 0.1 | 115.4 | 69.6 | 185.0 |
| November | 82.8 | 12.4 | 0.0 | 15.9 | 0.0 | 111.2 | 21.4 | 132.6 |
| December | 80.4 | 23.7 | 0.0 | 12.9 | 0.1 | 117.1 | 37.6 | 154.7 |
| 2002 | | | | | | | | |
| January | 77.2 | 7.7 | 0.0 | 13.1 | 0.1 | 98.0 | 56.9 | 154.9 |
| February | 84.1 | 12.0 | 0.0 | 16.7 | 0.2 | 113.0 | 52.8 | 165.8 |
| March | 84.7 | 10.7 | 0.0 | 13.8 | 0.0 | 109.2 | 43.0 | 152.2 |
| PUBLIC SECTOR (\$ million) | | | | | | | | |
| 1998-1999 | 16.4 | 1.7 | 0.1 | 2.4 | 0.0 | 20.7 | 228.5 | 249.2 |
| 1999-2000 | 8.5 | 0.5 | 0.0 | 6.4 | 0.0 | 15.4 | 223.9 | 239.2 |
| 2000-2001 | 8.0 | 2.2 | 0.1 | 7.0 | 0.1 | 17.3 | 267.8 | 285.2 |
| 2001 | | | | | | | | |
| March | 0.5 | 0.0 | 0.0 | 1.0 | 0.0 | 1.5 | 110.3 | 111.8 |
| April | 2.2 | 0.1 | 0.0 | 0.1 | 0.0 | 2.4 | 7.9 | 10.3 |
| May | 0.3 | 0.0 | 0.0 | 0.6 | 0.0 | 0.9 | 21.9 | 22.7 |
| June | 0.3 | 0.0 | 0.0 | 0.3 | 0.0 | 0.6 | 6.3 | 6.9 |
| July | 0.5 | 0.2 | 0.0 | 0.1 | 0.0 | 0.8 | 17.3 | 18.1 |
| August | 0.5 | 0.7 | 0.0 | 0.8 | 0.0 | 1.9 | 79.8 | 81.7 |
| September | 1.5 | 0.3 | 0.0 | 0.1 | 0.0 | 1.9 | 7.5 | 9.4 |
| October | 1.6 | 0.6 | 0.0 | 0.0 | 0.0 | 2.3 | 12.3 | 14.6 |
| November | 4.9 | 0.3 | 0.0 | 0.2 | 0.0 | 5.3 | 35.9 | 41.2 |
| December | 3.8 | 0.0 | 0.0 | 0.0 | 0.0 | 3.8 | 5.2 | 9.0 |
| 2002 | | | | | | | | |
| January | 1.7 | 0.1 | 0.0 | 0.0 | 0.0 | 1.8 | 16.1 | 18.0 |
| February | 8.5 | 0.3 | 0.0 | 0.8 | 0.0 | 9.5 | 6.9 | 16.4 |
| March | 1.7 | 0.0 | 0.0 | 0.5 | 0.0 | 2.1 | 20.9 | 23.0 |
| TOTAL (\$ million) | | | | | | | | |
| 1998-1999 | 641.3 | 134.3 | 0.5 | 138.9 | 4.5 | 919.6 | 671.6 | 1 591.2 |
| 1999-2000 | 847.2 | 175.8 | 1.3 | 168.8 | 18.8 | 1 211.8 | 585.7 | 1 797.5 |
| 2000-2001 | 607.6 | 128.0 | 0.5 | 154.4 | 2.5 | 892.9 | 718.2 | 1 611.1 |
| 2001 | | | | | | | | |
| March | 54.2 | 13.0 | 0.1 | 13.9 | 0.1 | 81.2 | 141.9 | 223.2 |
| April | 54.1 | 2.2 | 0.2 | 10.5 | 0.1 | 67.1 | 40.5 | 107.6 |
| May | 74.4 | 4.8 | 0.0 | 16.9 | 0.0 | 96.1 | 95.7 | 191.8 |
| June | 72.3 | 11.9 | 0.0 | 14.2 | 0.0 | 98.5 | 40.8 | 139.3 |
| July | 81.9 | 16.4 | 0.3 | 15.6 | 0.1 | 114.2 | 45.9 | 160.1 |
| August | 78.3 | 8.0 | 0.0 | 16.8 | 0.1 | 103.3 | 118.4 | 221.7 |
| September | 83.1 | 12.8 | 0.0 | 14.1 | 0.4 | 110.3 | 48.3 | 158.6 |
| October | 88.8 | 9.2 | 0.0 | 19.6 | 0.1 | 117.7 | 81.9 | 199.6 |
| November | 87.7 | 12.7 | 0.0 | 16.1 | 0.0 | 116.5 | 57.3 | 173.8 |
| December | 84.2 | 23.7 | 0.0 | 12.9 | 0.1 | 120.9 | 42.9 | 163.7 |
| 2002 | | | | | | | | |
| January | 78.8 | 7.8 | 0.0 | 13.1 | 0.1 | 99.8 | 73.0 | 172.9 |
| February | 92.6 | 12.2 | 0.0 | 17.5 | 0.2 | 122.6 | 59.6 | 182.2 |
| March | 86.3 | 10.7 | 0.0 | 14.3 | 0.0 | 111.3 | 63.9 | 175.2 |

(a) See Glossary for definition.

DWELLING UNITS APPROVED IN NEW RESIDENTIAL BUILDING(a): Original

NEW OTHER RESIDENTIAL BUILDING

| Period | New houses | Semi-detached, row or terrace houses, townhouses, etc of | | | Flats, units or apartments in a building of | | | Total | Total new residential building | |
|---------------------------------|------------|--|-------|--------------------|---|----------------------|-------|-------|--------------------------------|---------|
| | One storey | Two or more storeys | Total | One or two storeys | Three storeys | Four or more storeys | Total | | | |
| | | | | | | | | | | |
| NUMBER OF DWELLING UNITS | | | | | | | | | | |
| 1998-1999 | 6 761 | 381 | 309 | 690 | 53 | 105 | 186 | 344 | 1 034 | 7 795 |
| 1999-2000 | 8 389 | 650 | 396 | 1 046 | 36 | 166 | 216 | 418 | 1 464 | 9 853 |
| 2000-2001 | 5 633 | 419 | 286 | 705 | 46 | 65 | 282 | 393 | 1 098 | 6 731 |
| 2001 | | | | | | | | | | |
| January | 363 | 32 | 27 | 59 | 0 | 9 | 0 | 9 | 68 | 431 |
| February | 384 | 26 | 58 | 84 | 0 | 0 | 0 | 0 | 84 | 468 |
| March | 522 | 43 | 28 | 71 | 7 | 32 | 0 | 39 | 110 | 632 |
| April | 492 | 15 | 4 | 19 | 2 | 0 | 0 | 2 | 21 | 513 |
| May | 659 | 14 | 23 | 37 | 4 | 8 | 0 | 12 | 49 | 708 |
| June | 643 | 25 | 13 | 38 | 11 | 10 | 33 | 54 | 92 | 735 |
| July | 769 | 152 | 23 | 175 | 24 | 0 | 0 | 24 | 199 | 968 |
| August | 741 | 37 | 23 | 60 | 19 | 0 | 0 | 19 | 79 | 820 |
| September | 730 | 47 | 40 | 87 | 23 | 0 | 0 | 23 | 110 | 840 |
| October | 796 | 76 | 18 | 94 | 13 | 0 | 0 | 13 | 107 | 903 |
| November | 810 | 79 | 33 | 112 | 8 | 0 | 0 | 8 | 120 | 930 |
| December | 744 | 140 | 53 | 193 | 10 | 12 | 9 | 31 | 224 | 968 |
| 2002 | | | | | | | | | | |
| January | 687 | 43 | 17 | 60 | 16 | 0 | 0 | 16 | 76 | 763 |
| February | 836 | 96 | 21 | 117 | 0 | 14 | 0 | 14 | 131 | 967 |
| March | 774 | 92 | 17 | 109 | 0 | 21 | 0 | 21 | 130 | 904 |
| VALUE (\$ million) | | | | | | | | | | |
| 1998-1999 | 641.4 | 29.4 | 33.7 | 63.0 | 5.5 | 9.2 | 56.5 | 71.2 | 134.2 | 775.6 |
| 1999-2000 | 847.2 | 48.8 | 47.2 | 96.2 | 2.7 | 20.0 | 57.1 | 79.7 | 175.7 | 1 023.0 |
| 2000-2001 | 607.5 | 34.9 | 36.8 | 71.4 | 3.8 | 8.8 | 44.0 | 56.6 | 127.9 | 735.7 |
| 2001 | | | | | | | | | | |
| January | 39.3 | 3.5 | 2.9 | 6.3 | 0.0 | 0.9 | 0.0 | 0.9 | 7.2 | 46.5 |
| February | 41.3 | 2.0 | 7.1 | 9.1 | 0.0 | 0.0 | 0.0 | 0.0 | 9.1 | 50.4 |
| March | 54.2 | 3.8 | 3.8 | 7.6 | 0.4 | 5.0 | 0.0 | 5.4 | 13.0 | 67.2 |
| April | 54.1 | 1.3 | 0.7 | 2.0 | 0.2 | 0.0 | 0.0 | 0.2 | 2.2 | 56.3 |
| May | 74.4 | 1.3 | 2.5 | 3.8 | 0.4 | 0.6 | 0.0 | 1.0 | 4.8 | 79.3 |
| June | 72.3 | 1.8 | 0.9 | 2.7 | 0.9 | 0.8 | 7.6 | 9.3 | 11.9 | 84.2 |
| July | 81.9 | 12.2 | 2.9 | 15.2 | 1.3 | 0.0 | 0.0 | 1.3 | 16.4 | 98.3 |
| August | 78.3 | 3.3 | 3.3 | 6.6 | 1.4 | 0.0 | 0.0 | 1.4 | 8.0 | 86.3 |
| September | 83.1 | 4.5 | 5.5 | 10.0 | 2.8 | 0.0 | 0.0 | 2.8 | 12.8 | 95.9 |
| October | 88.8 | 6.0 | 2.1 | 8.1 | 1.1 | 0.0 | 0.0 | 1.1 | 9.2 | 98.0 |
| November | 87.7 | 7.1 | 4.6 | 11.7 | 1.0 | 0.0 | 0.0 | 1.0 | 12.7 | 100.4 |
| December | 84.2 | 11.4 | 8.5 | 20.0 | 0.9 | 1.5 | 1.4 | 3.7 | 23.7 | 107.9 |
| 2002 | | | | | | | | | | |
| January | 78.8 | 4.1 | 2.0 | 6.1 | 1.8 | 0.0 | 0.0 | 1.8 | 7.8 | 86.7 |
| February | 92.6 | 8.3 | 2.7 | 11.0 | 0.0 | 1.2 | 0.0 | 1.2 | 12.2 | 104.8 |
| March | 86.3 | 6.9 | 1.7 | 8.6 | 0.0 | 2.1 | 0.0 | 2.1 | 10.7 | 97.0 |

(a) See Glossary for definition.

VALUE OF BUILDING APPROVED, Chain Volume Measures(a)

| <i>Period</i> | <i>New houses</i> | <i>New other residential building</i> | <i>New residential building</i> | <i>Alterations and additions to residential buildings(b)</i> | <i>Total residential building</i> | <i>Non-residential building</i> | <i>Total building</i> |
|--|-------------------|---------------------------------------|---------------------------------|--|-----------------------------------|---------------------------------|-----------------------|
| ORIGINAL (\$ million) | | | | | | | |
| 1998-1999 | 688.5 | 145.9 | 834.4 | 154.9 | 989.4 | 692.7 | 1 688.2 |
| 1999-2000 | 847.2 | 175.8 | 1 022.9 | 188.9 | 1 211.8 | 585.7 | 1 797.5 |
| 2000-2001 | 534.5 | 117.0 | 651.4 | 138.5 | 790.0 | 702.0 | 1 491.9 |
| 2000 | | | | | | | |
| September | 118.5 | 44.9 | 163.4 | 29.8 | 193.2 | 177.6 | 370.8 |
| December | 122.2 | 28.1 | 150.4 | 35.7 | 186.1 | 144.8 | 330.9 |
| 2001 | | | | | | | |
| March | 118.8 | 26.8 | 145.5 | 36.4 | 182.0 | 208.4 | 390.4 |
| June | 175.0 | 17.2 | 192.1 | 36.6 | 228.7 | 171.1 | 399.8 |
| September | 209.1 | 33.2 | 242.4 | 40.8 | 283.1 | 204.3 | 487.5 |
| December | 220.3 | 40.5 | 260.7 | 41.3 | 302.0 | 173.8 | 475.8 |
| ORIGINAL (% change from preceding quarter) | | | | | | | |
| 2000 | | | | | | | |
| September | -28.9 | 40.0 | -17.8 | -23.2 | -18.7 | 20.0 | -4.0 |
| December | 3.2 | -37.4 | -8.0 | 19.7 | -3.7 | -18.4 | -10.8 |
| 2001 | | | | | | | |
| March | -2.8 | -4.9 | -3.2 | 2.0 | -2.2 | 43.9 | 18.0 |
| June | 47.3 | -35.9 | 32.0 | 0.4 | 25.7 | -17.9 | 2.4 |
| September | 19.5 | 93.7 | 26.1 | 11.6 | 23.8 | 19.4 | 21.9 |
| December | 5.3 | 21.8 | 7.6 | 1.2 | 6.7 | -14.9 | -2.4 |

(a) Reference year for chain volume measures is 1999-2000. Refer to Explanatory Notes paragraph 24-25.

(b) Refer to Explanatory Notes paragraph 16.

NON-RESIDENTIAL BUILDING APPROVED, Jobs By Value Range: Original

| Period | <i>Hotels, motels and other short term accommodation.....</i> | | <i>Shops</i> | | <i>Factories.....</i> | | <i>Offices.....</i> | | <i>Other business premises.....</i> | | <i>Educational.....</i> | |
|-------------------------------|---|------|--------------|-------|-----------------------|------|---------------------|------|-------------------------------------|-------|-------------------------|-------|
| | no. | \$m | no. | \$m | no. | \$m | no. | \$m | no. | \$m | no. | \$m |
| Value—\$50,000–\$199,999 | | | | | | | | | | | | |
| 2002 | | | | | | | | | | | | |
| January | 2 | 0.2 | 9 | 0.8 | 2 | 0.1 | 10 | 1.0 | 11 | 1.1 | 9 | 1.0 |
| February | 3 | 0.3 | 10 | 0.7 | 3 | 0.3 | 6 | 0.6 | 15 | 1.3 | 1 | 0.1 |
| March | 1 | 0.1 | 18 | 1.5 | 0 | 0.0 | 11 | 1.2 | 8 | 0.9 | 1 | 0.1 |
| Value—\$200,000–\$499,999 | | | | | | | | | | | | |
| 2002 | | | | | | | | | | | | |
| January | 2 | 0.6 | 1 | 0.5 | 2 | 0.6 | 4 | 1.5 | 7 | 2.3 | 4 | 1.5 |
| February | 0 | 0.0 | 1 | 0.3 | 2 | 0.8 | 7 | 2.2 | 4 | 1.1 | 1 | 0.4 |
| March | 0 | 0.0 | 5 | 1.2 | 0 | 0.0 | 8 | 2.2 | 4 | 1.2 | 1 | 0.5 |
| Value—\$500,000–\$999,999 | | | | | | | | | | | | |
| 2002 | | | | | | | | | | | | |
| January | 0 | 0.0 | 0 | 0.0 | 2 | 1.3 | 2 | 1.4 | 2 | 1.1 | 2 | 1.2 |
| February | 0 | 0.0 | 4 | 3.1 | 0 | 0.0 | 0 | 0.0 | 1 | 0.7 | 0 | 0.0 |
| March | 0 | 0.0 | 1 | 0.9 | 0 | 0.0 | 1 | 0.6 | 3 | 1.9 | 1 | 0.9 |
| Value—\$1,000,000–\$4,999,999 | | | | | | | | | | | | |
| 2002 | | | | | | | | | | | | |
| January | 0 | 0.0 | 1 | 1.0 | 3 | 4.5 | 1 | 4.0 | 1 | 3.8 | 3 | 5.1 |
| February | 0 | 0.0 | 2 | 3.5 | 2 | 4.0 | 0 | 0.0 | 0 | 0.0 | 4 | 5.9 |
| March | 0 | 0.0 | 1 | 2.0 | 2 | 2.9 | 0 | 0.0 | 4 | 8.9 | 4 | 8.1 |
| Value—\$5,000,000 and over | | | | | | | | | | | | |
| 2002 | | | | | | | | | | | | |
| January | 0 | 0.0 | 1 | 14.7 | 1 | 10.0 | 1 | 9.4 | 0 | 0.0 | 0 | 0.0 |
| February | 0 | 0.0 | 0 | 0.0 | 1 | 7.0 | 1 | 14.5 | 0 | 0.0 | 0 | 0.0 |
| March | 0 | 0.0 | 0 | 0.0 | 1 | 7.5 | 1 | 6.0 | 0 | 0.0 | 1 | 6.5 |
| Value—Total | | | | | | | | | | | | |
| 1998-1999 | 36 | 25.2 | 231 | 128.1 | 69 | 35.4 | 173 | 65.0 | 241 | 141.3 | 121 | 136.2 |
| 1999-2000 | 50 | 52.1 | 236 | 70.8 | 98 | 35.6 | 218 | 86.7 | 239 | 68.8 | 122 | 71.4 |
| 2000-2001 | 34 | 32.8 | 264 | 93.0 | 87 | 60.3 | 218 | 88.8 | 222 | 67.6 | 115 | 135.4 |
| 2002 | | | | | | | | | | | | |
| January | 4 | 0.8 | 12 | 16.9 | 10 | 16.5 | 18 | 17.2 | 21 | 8.3 | 18 | 8.8 |
| February | 3 | 0.3 | 17 | 7.6 | 8 | 12.1 | 14 | 17.3 | 20 | 3.1 | 6 | 6.4 |
| March | 1 | 0.1 | 25 | 5.6 | 3 | 10.4 | 21 | 10.0 | 19 | 12.9 | 8 | 16.0 |

NON-RESIDENTIAL BUILDING APPROVED, Jobs By Value Range: **Original** *continued*

| Period | Religious | | Health | | Entertainment and recreational | | Miscellaneous..... | | Total non-residential building..... | |
|-------------------------------|-----------------|------|--------------|-------|--------------------------------------|-------|--------------------|------|-------------------------------------|-------|
| | no. | \$m | no. | \$m | no. | \$m | no. | \$m | no. | \$m |
| Value—\$50,000—\$199,999 | | | | | | | | | | |
| 2002 | | | | | | | | | | |
| January | 2 | 0.3 | 0 | 0.0 | 4 | 0.3 | 4 | 0.4 | 53 | 5.3 |
| February | 0 | 0.0 | 4 | 0.4 | 4 | 0.4 | 6 | 0.7 | 52 | 4.8 |
| March | 1 | 0.1 | 3 | 0.3 | 3 | 0.2 | 6 | 0.5 | 52 | 5.0 |
| Value—\$200,000—\$499,999 | | | | | | | | | | |
| 2002 | | | | | | | | | | |
| January | 0 | 0.0 | 0 | 0.0 | 1 | 0.4 | 1 | 0.3 | 22 | 7.7 |
| February | 0 | 0.0 | 1 | 0.3 | 1 | 0.2 | 1 | 0.3 | 18 | 5.5 |
| March | 0 | 0.0 | 1 | 0.4 | 0 | 0.0 | 1 | 0.3 | 20 | 5.7 |
| Value—\$500,000—\$999,999 | | | | | | | | | | |
| 2002 | | | | | | | | | | |
| January | 1 | 0.5 | 1 | 0.6 | 1 | 0.6 | 0 | 0.0 | 11 | 6.7 |
| February | 0 | 0.0 | 1 | 0.8 | 0 | 0.0 | 1 | 0.9 | 7 | 5.4 |
| March | 0 | 0.0 | 1 | 0.8 | 1 | 0.5 | 1 | 0.9 | 9 | 6.5 |
| Value—\$1,000,000—\$4,999,999 | | | | | | | | | | |
| 2002 | | | | | | | | | | |
| January | 0 | 0.0 | 0 | 0.0 | 0 | 0.0 | 1 | 1.0 | 10 | 19.4 |
| February | 0 | 0.0 | 0 | 0.0 | 0 | 0.0 | 1 | 3.0 | 9 | 16.4 |
| March | 0 | 0.0 | 0 | 0.0 | 1 | 1.0 | 2 | 3.9 | 14 | 26.7 |
| Value—\$5,000,000 and over | | | | | | | | | | |
| 2002 | | | | | | | | | | |
| January | 0 | 0.0 | 0 | 0.0 | 0 | 0.0 | 0 | 0.0 | 3 | 34.0 |
| February | 0 | 0.0 | 1 | 6.0 | 0 | 0.0 | 0 | 0.0 | 3 | 27.5 |
| March | 0 | 0.0 | 0 | 0.0 | 0 | 0.0 | 0 | 0.0 | 3 | 20.0 |
| Value—Total | | | | | | | | | | |
| 1998-1999 | 13 | 1.8 | 42 | 62.3 | 63 | 46.2 | 67 | 30.1 | 1 056 | 671.6 |
| 1999-2000 | 24 | 11.8 | 63 | 46.3 | 47 | 118.8 | 79 | 23.4 | 1 176 | 585.7 |
| 2000-2001 | 16 | 3.5 | 52 | 149.5 | 52 | 29.3 | 82 | 57.8 | 1 142 | 718.2 |
| 2002 | | | | | | | | | | |
| January | 3 | 0.8 | 1 | 0.6 | 6 | 1.3 | 6 | 1.7 | 99 | 73.0 |
| February | 0 | 0.0 | 7 | 7.4 | 5 | 0.6 | 9 | 4.9 | 89 | 59.6 |
| March | 1 | 0.1 | 5 | 1.5 | 5 | 1.7 | 10 | 5.6 | 98 | 63.9 |

VALUE OF NON-RESIDENTIAL BUILDING APPROVED: Original

| Period | Hotels, motels and other short term accom- modation | Shops | Factories | Offices | Other business premises | Educational | Religious | Health | Entertain- ment and recreational | Miscell- aneous | Total non- residential building |
|-----------------------------|--|-------|-----------|---------|-------------------------------|-------------|-----------|--------|--|--------------------|---------------------------------------|
| PRIVATE SECTOR (\$ million) | | | | | | | | | | | |
| 1998-1999 | 24.2 | 126.3 | 34.8 | 48.3 | 120.0 | 24.2 | 1.8 | 23.7 | 27.5 | 12.2 | 443.0 |
| 1999-2000 | 51.7 | 70.8 | 35.5 | 52.5 | 66.3 | 31.9 | 11.8 | 16.1 | 15.5 | 9.7 | 361.8 |
| 2000-2001 | 31.9 | 88.4 | 60.3 | 72.1 | 63.3 | 38.4 | 3.5 | 57.7 | 22.7 | 11.9 | 450.3 |
| 2001 | | | | | | | | | | | |
| March | 5.2 | 4.9 | 2.9 | 1.7 | 4.0 | 4.3 | 0.1 | 4.8 | 2.8 | 0.8 | 31.6 |
| April | 2.4 | 12.5 | 4.3 | 2.6 | 3.7 | 1.2 | 0.0 | 4.2 | 0.8 | 0.8 | 32.6 |
| May | 0.2 | 5.8 | 27.5 | 11.8 | 8.3 | 3.0 | 0.1 | 15.2 | 1.1 | 0.9 | 73.8 |
| June | 2.9 | 10.2 | 0.4 | 3.0 | 9.5 | 2.3 | 0.1 | 4.7 | 0.5 | 0.9 | 34.5 |
| July | 0.7 | 6.2 | 1.4 | 0.7 | 9.1 | 2.7 | 0.4 | 7.2 | 0.0 | 0.3 | 28.6 |
| August | 0.3 | 20.4 | 0.9 | 3.5 | 3.3 | 2.3 | 0.1 | 6.5 | 0.0 | 1.3 | 38.6 |
| September | 0.8 | 4.7 | 1.0 | 3.9 | 10.9 | 0.6 | 0.0 | 14.7 | 3.6 | 0.7 | 40.9 |
| October | 28.2 | 15.5 | 4.6 | 2.3 | 8.6 | 2.7 | 0.4 | 6.0 | 0.5 | 0.9 | 69.6 |
| November | 0.3 | 4.7 | 1.8 | 5.0 | 3.1 | 4.7 | 0.1 | 0.3 | 1.3 | 0.3 | 21.4 |
| December | 12.0 | 4.1 | 1.9 | 2.2 | 7.5 | 3.5 | 0.1 | 2.2 | 0.1 | 4.0 | 37.6 |
| 2002 | | | | | | | | | | | |
| January | 0.8 | 16.9 | 16.5 | 11.9 | 4.5 | 2.9 | 0.8 | 0.6 | 0.5 | 1.4 | 56.9 |
| February | 0.2 | 7.6 | 12.1 | 16.9 | 3.0 | 1.5 | 0.0 | 6.7 | 0.3 | 4.6 | 52.8 |
| March | 0.1 | 5.5 | 10.4 | 3.1 | 9.0 | 8.2 | 0.1 | 1.1 | 1.7 | 3.7 | 43.0 |
| PUBLIC SECTOR (\$ million) | | | | | | | | | | | |
| 1998-1999 | 1.0 | 1.7 | 0.6 | 16.7 | 21.4 | 112.0 | 0.0 | 38.6 | 18.7 | 17.9 | 228.5 |
| 1999-2000 | 0.4 | 0.0 | 0.1 | 34.1 | 2.6 | 39.5 | 0.0 | 30.1 | 103.3 | 13.7 | 223.9 |
| 2000-2001 | 0.8 | 4.6 | 0.0 | 16.7 | 4.3 | 97.0 | 0.0 | 91.8 | 6.6 | 45.9 | 267.8 |
| 2001 | | | | | | | | | | | |
| March | 0.0 | 2.5 | 0.0 | 0.3 | 0.5 | 24.6 | 0.0 | 81.3 | 0.6 | 0.6 | 110.3 |
| April | 0.0 | 0.0 | 0.0 | 0.4 | 0.2 | 5.7 | 0.0 | 0.5 | 0.1 | 1.1 | 7.9 |
| May | 0.2 | 0.9 | 0.0 | 2.6 | 0.0 | 15.5 | 0.0 | 1.1 | 0.4 | 1.3 | 21.9 |
| June | 0.0 | 0.0 | 0.0 | 4.1 | 0.5 | 0.0 | 0.0 | 0.0 | 1.1 | 0.6 | 6.3 |
| July | 0.0 | 0.0 | 0.0 | 2.4 | 0.0 | 3.8 | 0.0 | 4.2 | 3.7 | 3.2 | 17.3 |
| August | 0.0 | 0.0 | 0.0 | 2.6 | 0.1 | 0.0 | 0.0 | 60.0 | 16.1 | 1.0 | 79.8 |
| September | 0.0 | 0.0 | 0.0 | 1.5 | 0.0 | 0.4 | 0.0 | 5.0 | 0.4 | 0.1 | 7.5 |
| October | 0.0 | 0.6 | 0.0 | 3.6 | 0.7 | 4.0 | 0.0 | 2.7 | 0.6 | 0.2 | 12.3 |
| November | 0.1 | 0.3 | 0.0 | 1.9 | 1.0 | 3.4 | 0.0 | 28.4 | 0.8 | 0.1 | 35.9 |
| December | 0.0 | 0.0 | 0.0 | 0.9 | 0.1 | 0.7 | 0.0 | 0.6 | 2.7 | 0.3 | 5.2 |
| 2002 | | | | | | | | | | | |
| January | 0.0 | 0.0 | 0.0 | 5.3 | 3.8 | 5.9 | 0.0 | 0.0 | 0.8 | 0.3 | 16.1 |
| February | 0.1 | 0.0 | 0.0 | 0.5 | 0.1 | 4.9 | 0.0 | 0.8 | 0.3 | 0.3 | 6.9 |
| March | 0.0 | 0.1 | 0.0 | 6.9 | 3.9 | 7.8 | 0.0 | 0.4 | 0.0 | 1.9 | 20.9 |
| TOTAL (\$ million) | | | | | | | | | | | |
| 1998-1999 | 25.2 | 128.1 | 35.4 | 65.0 | 141.3 | 136.2 | 1.8 | 62.3 | 46.2 | 30.1 | 671.6 |
| 1999-2000 | 52.1 | 70.8 | 35.6 | 86.7 | 68.8 | 71.4 | 11.8 | 46.3 | 118.8 | 23.4 | 585.7 |
| 2000-2001 | 32.8 | 93.0 | 60.3 | 88.8 | 67.6 | 135.4 | 3.5 | 149.5 | 29.3 | 57.8 | 718.2 |
| 2001 | | | | | | | | | | | |
| March | 5.2 | 7.4 | 2.9 | 2.0 | 4.6 | 28.9 | 0.1 | 86.1 | 3.3 | 1.4 | 141.9 |
| April | 2.4 | 12.5 | 4.3 | 3.0 | 4.0 | 6.9 | 0.0 | 4.7 | 0.9 | 1.9 | 40.5 |
| May | 0.3 | 6.6 | 27.5 | 14.4 | 8.3 | 18.4 | 0.1 | 16.3 | 1.5 | 2.2 | 95.7 |
| June | 2.9 | 10.2 | 0.4 | 7.1 | 10.1 | 2.3 | 0.1 | 4.7 | 1.6 | 1.4 | 40.8 |
| July | 0.7 | 6.2 | 1.4 | 3.1 | 9.1 | 6.5 | 0.4 | 11.4 | 3.7 | 3.5 | 45.9 |
| August | 0.3 | 20.4 | 0.9 | 6.1 | 3.5 | 2.3 | 0.1 | 66.5 | 16.1 | 2.3 | 118.4 |
| September | 0.8 | 4.7 | 1.0 | 5.4 | 10.9 | 1.0 | 0.0 | 19.7 | 4.0 | 0.8 | 48.3 |
| October | 28.2 | 16.1 | 4.6 | 5.9 | 9.3 | 6.6 | 0.4 | 8.6 | 1.0 | 1.1 | 81.9 |
| November | 0.4 | 5.0 | 1.8 | 6.9 | 4.1 | 8.1 | 0.1 | 28.7 | 2.1 | 0.3 | 57.3 |
| December | 12.0 | 4.1 | 1.9 | 3.1 | 7.6 | 4.2 | 0.1 | 2.8 | 2.8 | 4.3 | 42.9 |
| 2002 | | | | | | | | | | | |
| January | 0.8 | 16.9 | 16.5 | 17.2 | 8.3 | 8.8 | 0.8 | 0.6 | 1.3 | 1.7 | 73.0 |
| February | 0.3 | 7.6 | 12.1 | 17.3 | 3.1 | 6.4 | 0.0 | 7.4 | 0.6 | 4.9 | 59.6 |
| March | 0.1 | 5.6 | 10.4 | 10.0 | 12.9 | 16.0 | 0.1 | 1.5 | 1.7 | 5.6 | 63.9 |

BUILDING APPROVED IN THE ADELAIDE STATISTICAL DIVISION: Original

DWELLINGS (no.)..... VALUE (\$'000).....

| Period | DWELLINGS (no.) | | | VALUE (\$'000) | | | | | |
|------------------|-----------------|--------------------------------|--------------------|----------------|--------------------------------|--|----------------------------|--------------------------|----------------|
| | New houses | New other residential building | Total dwellings(a) | New houses | New other residential building | Alterations and additions to residential building(b) | Total residential building | Non-residential building | Total building |
| PRIVATE SECTOR | | | | | | | | | |
| 1999-2000 | 5 389 | 1 294 | 6 847 | 569 266 | 163 869 | 146 902 | 880 037 | 255 553 | 1 135 589 |
| 2000-2001 | 3 761 | 992 | 4 788 | 422 742 | 119 114 | 116 933 | 658 789 | 361 407 | 1 020 196 |
| 2001 | | | | | | | | | |
| March | 349 | 95 | 447 | 37 479 | 11 913 | 10 182 | 59 574 | 23 438 | 83 012 |
| April | 325 | 15 | 342 | 36 619 | 1 835 | 8 706 | 47 159 | 27 250 | 74 409 |
| May | 440 | 45 | 486 | 52 576 | 4 387 | 13 126 | 70 089 | 68 688 | 138 777 |
| June | 447 | 72 | 520 | 51 837 | 10 381 | 10 706 | 72 924 | 26 041 | 98 965 |
| July | 481 | 173 | 660 | 52 335 | 15 023 | 13 199 | 80 557 | 22 748 | 103 305 |
| August | 492 | 57 | 553 | 53 487 | 6 202 | 13 251 | 72 941 | 26 197 | 99 137 |
| September | 438 | 89 | 550 | 51 260 | 11 211 | 11 365 | 73 836 | 29 782 | 103 618 |
| October | 469 | 86 | 556 | 53 750 | 7 171 | 15 276 | 76 197 | 49 386 | 125 583 |
| November | 480 | 78 | 559 | 54 170 | 9 894 | 13 459 | 77 522 | 14 386 | 91 908 |
| December | 450 | 218 | 668 | 54 662 | 23 190 | 9 471 | 87 323 | 26 030 | 113 353 |
| 2002 | | | | | | | | | |
| January | 444 | 54 | 499 | 54 234 | 5 659 | 11 098 | 70 991 | 49 463 | 120 454 |
| February | 475 | 72 | 550 | 54 083 | 7 945 | 13 598 | 75 625 | 39 017 | 114 642 |
| March | 444 | 68 | 512 | 53 606 | 7 384 | 10 587 | 71 576 | 30 002 | 101 578 |
| PUBLIC SECTOR | | | | | | | | | |
| 1999-2000 | 84 | 3 | 87 | 7 009 | 210 | 2 343 | 9 562 | 190 320 | 199 882 |
| 2000-2001 | 55 | 17 | 75 | 4 894 | 1 450 | 3 513 | 9 858 | 253 955 | 263 813 |
| 2001 | | | | | | | | | |
| March | 6 | 0 | 6 | 461 | 0 | 130 | 591 | 109 032 | 109 624 |
| April | 9 | 2 | 11 | 1 455 | 98 | 0 | 1 553 | 7 148 | 8 701 |
| May | 3 | 0 | 3 | 231 | 0 | 501 | 732 | 20 281 | 21 013 |
| June | 2 | 0 | 2 | 165 | 0 | 0 | 165 | 5 675 | 5 840 |
| July | 6 | 0 | 6 | 530 | 0 | 116 | 646 | 11 110 | 11 755 |
| August | 6 | 0 | 6 | 406 | 0 | 399 | 805 | 78 595 | 79 400 |
| September | 19 | 4 | 23 | 1 491 | 333 | 59 | 1 883 | 7 463 | 9 346 |
| October | 18 | 8 | 26 | 1 505 | 640 | 0 | 2 145 | 7 829 | 9 974 |
| November | 46 | 4 | 50 | 4 866 | 299 | 14 | 5 180 | 35 056 | 40 236 |
| December | 46 | 0 | 46 | 3 768 | 0 | 0 | 3 768 | 1 130 | 4 898 |
| 2002 | | | | | | | | | |
| January | 20 | 2 | 22 | 1 637 | 130 | 15 | 1 781 | 14 284 | 16 066 |
| February | 35 | 0 | 35 | 2 911 | 0 | 0 | 2 911 | 6 566 | 9 477 |
| March | 17 | 0 | 17 | 1 474 | 0 | 352 | 1 826 | 17 236 | 19 061 |
| TOTAL | | | | | | | | | |
| 1999-2000 | 5 473 | 1 297 | 6 934 | 576 274 | 164 079 | 149 245 | 889 598 | 445 873 | 1 335 471 |
| 2000-2001 | 3 816 | 1 009 | 4 863 | 427 637 | 120 564 | 120 446 | 668 647 | 615 363 | 1 284 009 |
| 2001 | | | | | | | | | |
| March | 355 | 95 | 453 | 37 940 | 11 913 | 10 312 | 60 165 | 132 470 | 192 635 |
| April | 334 | 17 | 353 | 38 074 | 1 933 | 8 706 | 48 712 | 34 398 | 83 111 |
| May | 443 | 45 | 489 | 52 807 | 4 387 | 13 628 | 70 821 | 88 969 | 159 790 |
| June | 449 | 72 | 522 | 52 002 | 10 381 | 10 706 | 73 089 | 31 716 | 104 805 |
| July | 487 | 173 | 666 | 52 865 | 15 023 | 13 315 | 81 202 | 33 857 | 115 060 |
| August | 498 | 57 | 559 | 53 893 | 6 202 | 13 650 | 73 746 | 104 792 | 178 537 |
| September | 457 | 93 | 573 | 52 751 | 11 544 | 11 424 | 75 719 | 37 245 | 112 964 |
| October | 487 | 94 | 582 | 55 255 | 7 811 | 15 276 | 78 342 | 57 215 | 135 557 |
| November | 526 | 82 | 609 | 59 036 | 10 193 | 13 473 | 82 702 | 49 442 | 132 144 |
| December | 496 | 218 | 714 | 58 430 | 23 190 | 9 471 | 91 091 | 27 160 | 118 251 |
| 2002 | | | | | | | | | |
| January | 464 | 56 | 521 | 55 871 | 5 789 | 11 113 | 72 772 | 63 747 | 136 519 |
| February | 510 | 72 | 585 | 56 993 | 7 945 | 13 598 | 78 536 | 45 583 | 124 119 |
| March | 461 | 68 | 529 | 55 079 | 7 384 | 10 938 | 73 402 | 47 237 | 120 639 |

(a) Refer to footnote (a) in Table 12.

(b) Refer to Explanatory Notes paragraph 16.

BUILDING APPROVED IN STATISTICAL AREAS—Mar Qtr 2002

| Statistical area | DWELLINGS (no.)..... | | | VALUE (\$'000)..... | | | | | |
|------------------------------|----------------------|--------------------------------|--------------------|---------------------|---------------------------------|---|----------------------------|--------------------------|----------------|
| | New houses | New other residential building | Total dwellings(a) | New houses | New other residential buildings | Alterations and additions to residential buildings(b) | Total residential building | Non-residential building | Total building |
| SOUTH AUSTRALIA | 2 297 | 337 | 2 639 | 257 788 | 30 742 | 45 196 | 333 726 | 196 565 | 530 291 |
| Adelaide (SD) | 1 435 | 196 | 1 635 | 167 943 | 21 118 | 35 649 | 224 710 | 156 567 | 381 277 |
| Northern Adelaide (SSD) | 599 | 17 | 616 | 67 334 | 1 871 | 3 899 | 73 103 | 65 953 | 139 057 |
| Gawler (M) | 29 | 0 | 29 | 2 768 | 0 | 343 | 3 110 | 19 200 | 22 310 |
| Playford (C)—East Central | 61 | 0 | 61 | 6 043 | 0 | 66 | 6 109 | 250 | 6 359 |
| Playford (C)—Elizabeth | 21 | 0 | 21 | 1 538 | 0 | 61 | 1 599 | 4 579 | 6 178 |
| Playford (C)—Hills | 22 | 0 | 22 | 2 042 | 0 | 11 | 2 053 | 0 | 2 053 |
| Playford (C)—West | 13 | 0 | 13 | 1 763 | 0 | 219 | 1 982 | 300 | 2 282 |
| Playford (C)—West Central | 13 | 0 | 13 | 1 166 | 0 | 63 | 1 229 | 0 | 1 229 |
| Port Adel. Enfield (C)—East | 95 | 4 | 99 | 11 432 | 364 | 113 | 11 908 | 1 808 | 13 716 |
| Port Adel. Enfield (C)—Inner | 12 | 2 | 14 | 1 159 | 167 | 106 | 1 432 | 600 | 2 032 |
| Salisbury (C)—Central | 19 | 0 | 19 | 1 899 | 0 | 337 | 2 236 | 360 | 2 596 |
| Salisbury (C)—Inner North | 47 | 0 | 47 | 4 173 | 0 | 548 | 4 721 | 360 | 5 081 |
| Salisbury (C)—North-East | 6 | 0 | 6 | 514 | 0 | 179 | 693 | 797 | 1 491 |
| Salisbury (C)—South-East | 65 | 0 | 65 | 8 194 | 0 | 315 | 8 509 | 853 | 9 362 |
| Salisbury (C) Bal | 80 | 4 | 84 | 9 783 | 500 | 40 | 10 323 | 28 592 | 38 915 |
| Tea Tree Gully (C)—Central | 12 | 0 | 12 | 1 471 | 0 | 318 | 1 789 | 812 | 2 601 |
| Tea Tree Gully (C)—Hills | 5 | 0 | 5 | 764 | 0 | 237 | 1 002 | 0 | 1 002 |
| Tea Tree Gully (C)—North | 81 | 7 | 88 | 10 413 | 840 | 422 | 11 675 | 80 | 11 755 |
| Tea Tree Gully (C)—South | 18 | 0 | 18 | 2 213 | 0 | 520 | 2 733 | 7 362 | 10 095 |
| Western Adelaide (SSD) | 224 | 32 | 256 | 24 306 | 3 635 | 6 569 | 34 509 | 31 140 | 65 649 |
| Charles Sturt (C)—Coastal | 27 | 14 | 41 | 3 289 | 1 507 | 745 | 5 540 | 6 158 | 11 698 |
| Charles Sturt (C)—Inner East | 25 | 0 | 25 | 2 964 | 0 | 853 | 3 817 | 315 | 4 132 |
| Charles Sturt (C)—Inner West | 26 | 8 | 34 | 3 521 | 670 | 467 | 4 658 | 406 | 5 064 |
| Charles Sturt (C)—North-East | 21 | 0 | 21 | 2 106 | 0 | 1 066 | 3 172 | 2 600 | 5 772 |
| Port Adel. Enfield (C)—Coast | 28 | 2 | 30 | 2 372 | 130 | 1 081 | 3 582 | 3 777 | 7 359 |
| Port Adel. Enfield (C)—Port | 50 | 0 | 50 | 4 412 | 0 | 291 | 4 702 | 4 602 | 9 304 |
| West Torrens (C)—East | 25 | 8 | 33 | 2 790 | 1 328 | 1 310 | 5 428 | 7 692 | 13 120 |
| West Torrens (C)—West | 22 | 0 | 22 | 2 852 | 0 | 756 | 3 609 | 5 590 | 9 199 |
| Unincorp. Western | 0 | 0 | 0 | 0 | 0 | 0 | 0 | 0 | 0 |
| Eastern Adelaide (SSD) | 176 | 95 | 275 | 26 897 | 10 483 | 15 133 | 52 513 | 50 463 | 102 976 |
| Adelaide (C) | 6 | 50 | 59 | 1 940 | 4 930 | 998 | 7 868 | 17 138 | 25 006 |
| Adelaide Hills (DC)—Central | 8 | 0 | 8 | 1 261 | 0 | 1 162 | 2 423 | 90 | 2 513 |
| Adelaide Hills (DC)—Ranges | 13 | 0 | 13 | 2 134 | 0 | 960 | 3 093 | 0 | 3 093 |
| Burnside (C)—North-East | 19 | 10 | 29 | 3 497 | 1 420 | 1 555 | 6 472 | 2 119 | 8 591 |
| Burnside (C)—South-West | 16 | 4 | 20 | 3 540 | 449 | 1 488 | 5 477 | 7 121 | 12 598 |
| Campbelltown (C)—East | 36 | 2 | 38 | 4 428 | 140 | 317 | 4 884 | 394 | 5 278 |
| Campbelltown (C)—West | 34 | 2 | 36 | 3 234 | 133 | 487 | 3 853 | 973 | 4 826 |
| Norw. Pham St Ptrs (C)—East | 11 | 2 | 13 | 1 455 | 102 | 1 091 | 2 648 | 15 870 | 18 518 |
| Norw. Pham St Ptrs (C)—West | 6 | 4 | 10 | 1 020 | 450 | 1 250 | 2 720 | 3 848 | 6 568 |
| Prospect (C) | 6 | 2 | 8 | 954 | 180 | 1 511 | 2 646 | 2 000 | 4 646 |
| Unley (C)—East | 3 | 17 | 21 | 460 | 2 379 | 1 299 | 4 138 | 510 | 4 648 |
| Unley (C)—West | 8 | 2 | 10 | 1 743 | 300 | 1 691 | 3 734 | 400 | 4 134 |
| Walkerville (M) | 10 | 0 | 10 | 1 231 | 0 | 1 325 | 2 556 | 0 | 2 556 |
| Southern Adelaide (SSD) | 436 | 52 | 488 | 49 406 | 5 129 | 10 048 | 64 584 | 9 012 | 73 595 |
| Holdfast Bay (C)—North | 11 | 7 | 18 | 1 494 | 872 | 1 883 | 4 248 | 142 | 4 390 |
| Holdfast Bay (C)—South | 13 | 6 | 19 | 1 980 | 510 | 426 | 2 916 | 632 | 3 548 |
| Marion (C)—Central | 23 | 10 | 33 | 2 841 | 787 | 505 | 4 133 | 500 | 4 633 |
| Marion (C)—North | 25 | 18 | 43 | 2 206 | 1 775 | 510 | 4 492 | 770 | 5 262 |
| Marion (C)—South | 78 | 0 | 78 | 9 313 | 0 | 277 | 9 590 | 0 | 9 590 |
| Mitcham (C)—Hills | 25 | 0 | 25 | 4 704 | 0 | 864 | 5 568 | 1 461 | 7 028 |
| Mitcham (C)—North-East | 2 | 2 | 4 | 417 | 200 | 2 071 | 2 688 | 100 | 2 788 |
| Mitcham (C)—West | 5 | 2 | 7 | 629 | 200 | 889 | 1 719 | 1 368 | 3 087 |
| Onkaparinga (C)—Hackham | 10 | 2 | 12 | 1 070 | 115 | 151 | 1 337 | 0 | 1 337 |
| Onkaparinga (C)—Hills | 36 | 0 | 36 | 4 277 | 0 | 812 | 5 090 | 610 | 5 700 |
| Onkaparinga (C)—Morphett | 24 | 0 | 24 | 2 065 | 0 | 92 | 2 157 | 1 120 | 3 277 |
| Onkaparinga (C)—North Coast | 33 | 0 | 33 | 3 439 | 0 | 106 | 3 544 | 1 379 | 4 923 |
| Onkaparinga (C)—Reservoir | 35 | 0 | 35 | 4 778 | 0 | 310 | 5 088 | 0 | 5 088 |
| Onkaparinga (C)—South Coast | 48 | 5 | 53 | 4 469 | 670 | 646 | 5 785 | 510 | 6 295 |
| Onkaparinga (C)—Woodcroft | 68 | 0 | 68 | 5 726 | 0 | 504 | 6 230 | 420 | 6 650 |

DWELLINGS (no.)..... VALUE (\$'000).....

| Statistical area | DWELLINGS (no.) | | | VALUE (\$'000) | | | | | |
|-----------------------------------|-----------------|--------------------------------|--------------------|----------------|---------------------------------|---|----------------------------|--------------------------|----------------|
| | New houses | New other residential building | Total dwellings(a) | New houses | New other residential buildings | Alterations and additions to residential buildings(b) | Total residential building | Non-residential building | Total building |
| Outer Adelaide (SD) | 420 | 128 | 549 | 42 673 | 8 453 | 4 037 | 55 163 | 7 259 | 62 422 |
| Barossa (SSD) | 110 | 0 | 111 | 11 262 | 0 | 1 105 | 12 367 | 5 333 | 17 700 |
| Barossa (DC)—Angaston | 19 | 0 | 20 | 1 821 | 0 | 307 | 2 127 | 2 118 | 4 245 |
| Barossa (DC)—Barossa | 11 | 0 | 11 | 1 247 | 0 | 96 | 1 343 | 60 | 1 403 |
| Barossa (DC)—Tanunda | 5 | 0 | 5 | 588 | 0 | 101 | 689 | 0 | 689 |
| Light (DC) | 52 | 0 | 52 | 5 430 | 0 | 254 | 5 684 | 2 860 | 8 544 |
| Mallala (DC) | 23 | 0 | 23 | 2 177 | 0 | 348 | 2 525 | 295 | 2 819 |
| Kangaroo Island (SSD) | 15 | 17 | 32 | 1 492 | 1 720 | 170 | 3 382 | 54 | 3 436 |
| Kangaroo Island (DC) | 15 | 17 | 32 | 1 492 | 1 720 | 170 | 3 382 | 54 | 3 436 |
| Mt Lofty Ranges (SSD) | 98 | 0 | 98 | 11 266 | 0 | 1 343 | 12 608 | 483 | 13 091 |
| Adelaide Hills (DC)—North | 16 | 0 | 16 | 2 202 | 0 | 149 | 2 351 | 85 | 2 436 |
| Adelaide Hills (DC) Bal | 10 | 0 | 10 | 1 552 | 0 | 449 | 2 001 | 0 | 2 001 |
| Mount Barker (DC)—Central | 49 | 0 | 49 | 5 308 | 0 | 417 | 5 725 | 318 | 6 043 |
| Mount Barker (DC) Bal | 23 | 0 | 23 | 2 202 | 0 | 329 | 2 531 | 80 | 2 611 |
| Fleurieu (SSD) | 197 | 111 | 308 | 18 654 | 6 733 | 1 418 | 26 806 | 1 390 | 28 196 |
| Alexandrina (DC)—Coastal | 98 | 95 | 193 | 8 034 | 5 243 | 518 | 13 795 | 190 | 13 985 |
| Alexandrina (DC)—Strathalbyn | 46 | 2 | 48 | 5 229 | 170 | 304 | 5 703 | 0 | 5 703 |
| Victor Harbor (DC) | 35 | 12 | 47 | 3 728 | 1 080 | 313 | 5 120 | 1 200 | 6 320 |
| Yankalilla (DC) | 18 | 2 | 20 | 1 663 | 240 | 283 | 2 187 | 0 | 2 187 |
| Yorke and Lower North (SD) | 73 | 2 | 75 | 5 736 | 260 | 694 | 6 690 | 3 186 | 9 876 |
| Yorke (SSD) | 57 | 2 | 59 | 4 065 | 260 | 546 | 4 871 | 192 | 5 063 |
| Barunga West (DC) | 4 | 0 | 4 | 266 | 0 | 55 | 321 | 52 | 373 |
| Copper Coast (DC) | 18 | 2 | 20 | 1 527 | 260 | 116 | 1 903 | 70 | 1 973 |
| Yorke Peninsula (DC)—North | 14 | 0 | 14 | 928 | 0 | 191 | 1 120 | 70 | 1 190 |
| Yorke Peninsula (DC)—South | 21 | 0 | 21 | 1 344 | 0 | 184 | 1 528 | 0 | 1 528 |
| Unincorp. Yorke | 0 | 0 | 0 | 0 | 0 | 0 | 0 | 0 | 0 |
| Lower North (SSD) | 16 | 0 | 16 | 1 671 | 0 | 148 | 1 819 | 2 995 | 4 813 |
| Clare and Gilbert Valleys (DC) | 10 | 0 | 10 | 1 059 | 0 | 104 | 1 163 | 1 180 | 2 343 |
| Goyder (DC) | 0 | 0 | 0 | 0 | 0 | 0 | 0 | 0 | 0 |
| Wakefield (DC) | 6 | 0 | 6 | 612 | 0 | 44 | 656 | 1 815 | 2 470 |
| Murray Lands (SD) | 75 | 4 | 79 | 7 868 | 335 | 792 | 8 995 | 14 000 | 22 995 |
| Riverland (SSD) | 43 | 2 | 45 | 4 462 | 185 | 523 | 5 169 | 5 776 | 10 945 |
| Berri & Barmera (DC)—Barmera | 3 | 0 | 3 | 221 | 0 | 10 | 231 | 0 | 231 |
| Berri & Barmera (DC)—Berri | 8 | 2 | 10 | 1 169 | 185 | 102 | 1 455 | 120 | 1 575 |
| Loxton Waikerie (DC)—East | 7 | 0 | 7 | 901 | 0 | 90 | 991 | 0 | 991 |
| Loxton Waikerie (DC)—West | 9 | 0 | 9 | 604 | 0 | 78 | 682 | 1 560 | 2 242 |
| Mid Murray (DC) | 9 | 0 | 9 | 653 | 0 | 201 | 854 | 0 | 854 |
| Renmark Paringa (DC)—Paringa | 3 | 0 | 3 | 423 | 0 | 0 | 423 | 0 | 423 |
| Renmark Paringa (DC)—Renmark | 4 | 0 | 4 | 491 | 0 | 42 | 533 | 4 096 | 4 629 |
| Unincorp. Riverland | 0 | 0 | 0 | 0 | 0 | 0 | 0 | 0 | 0 |
| Murray Mallee (SSD) | 32 | 2 | 34 | 3 406 | 150 | 270 | 3 826 | 8 224 | 12 050 |
| Karoonda East Murray (DC) | 1 | 0 | 1 | 183 | 0 | 0 | 183 | 224 | 407 |
| Murray Bridge (RC) | 24 | 2 | 26 | 2 720 | 150 | 144 | 3 014 | 7 000 | 10 014 |
| Southern Mallee (DC) | 1 | 0 | 1 | 80 | 0 | 0 | 80 | 0 | 80 |
| The Coorong (DC) | 6 | 0 | 6 | 424 | 0 | 126 | 549 | 1 000 | 1 549 |
| Unincorp. Murray Mallee | 0 | 0 | 0 | 0 | 0 | 0 | 0 | 0 | 0 |
| South East (SD) | 94 | 4 | 98 | 13 341 | 456 | 1 645 | 15 442 | 7 605 | 23 047 |
| Upper South East (SSD) | 23 | 2 | 25 | 2 912 | 246 | 654 | 3 811 | 480 | 4 291 |
| Lacepede (DC) | 6 | 0 | 6 | 726 | 0 | 90 | 816 | 0 | 816 |
| Naracoorte and Lucindale (DC) | 10 | 0 | 10 | 1 494 | 0 | 138 | 1 632 | 250 | 1 882 |
| Robe (DC) | 4 | 0 | 4 | 290 | 0 | 290 | 580 | 50 | 630 |
| Tatiara (DC) | 3 | 2 | 5 | 402 | 246 | 136 | 783 | 180 | 963 |

| Statistical area | DWELLINGS (no.)..... | | | VALUE (\$'000)..... | | | | | |
|------------------------------|----------------------|--------------------------------|--------------------|---------------------|---------------------------------|---|----------------------------|--------------------------|----------------|
| | New houses | New other residential building | Total dwellings(a) | New houses | New other residential buildings | Alterations and additions to residential buildings(b) | Total residential building | Non-residential building | Total building |
| Lower South East (SSD) | 71 | 2 | 73 | 10 429 | 210 | 992 | 11 630 | 7 125 | 18 755 |
| Grant (DC) | 14 | 0 | 14 | 2 132 | 0 | 540 | 2 672 | 182 | 2 854 |
| Mount Gambier (C) | 38 | 0 | 38 | 5 260 | 0 | 199 | 5 458 | 3 181 | 8 640 |
| Wattle Range (DC)—East | 4 | 2 | 6 | 843 | 210 | 15 | 1 068 | 1 800 | 2 868 |
| Wattle Range (DC)—West | 15 | 0 | 15 | 2 194 | 0 | 238 | 2 432 | 1 962 | 4 394 |
| Eyre (SD) | 146 | 0 | 146 | 12 430 | 0 | 1 650 | 14 080 | 4 939 | 19 019 |
| Lincoln (SSD) | 144 | 0 | 144 | 12 215 | 0 | 1 561 | 13 776 | 4 939 | 18 715 |
| Cleve (DC) | 0 | 0 | 0 | 0 | 0 | 0 | 0 | 0 | 0 |
| Elliston (DC) | 2 | 0 | 2 | 170 | 0 | 132 | 302 | 0 | 302 |
| Franklin Harbor (DC) | 3 | 0 | 3 | 351 | 0 | 0 | 351 | 70 | 421 |
| Kimba (DC) | 0 | 0 | 0 | 0 | 0 | 0 | 0 | 0 | 0 |
| Le Hunte (DC) | 1 | 0 | 1 | 45 | 0 | 0 | 45 | 0 | 45 |
| Lower Eyre Peninsula (DC) | 8 | 0 | 8 | 603 | 0 | 136 | 738 | 0 | 738 |
| Port Lincoln (C) | 121 | 0 | 121 | 9 972 | 0 | 1 247 | 11 218 | 4 869 | 16 087 |
| Tumby Bay (DC) | 9 | 0 | 9 | 1 075 | 0 | 47 | 1 121 | 0 | 1 121 |
| Unincorp. Lincoln | 0 | 0 | 0 | 0 | 0 | 0 | 0 | 0 | 0 |
| West Coast (SSD) | 2 | 0 | 2 | 215 | 0 | 89 | 304 | 0 | 304 |
| Ceduna (DC) | 2 | 0 | 2 | 215 | 0 | 79 | 294 | 0 | 294 |
| Streaky Bay (DC) | 0 | 0 | 0 | 0 | 0 | 10 | 10 | 0 | 10 |
| Unincorp. West Coast | 0 | 0 | 0 | 0 | 0 | 0 | 0 | 0 | 0 |
| Northern (SD) | 54 | 3 | 57 | 7 797 | 120 | 730 | 8 646 | 3 009 | 11 655 |
| Whyalla (SSD) | 4 | 3 | 7 | 578 | 120 | 324 | 1 022 | 317 | 1 339 |
| Whyalla (C) | 4 | 3 | 7 | 578 | 120 | 324 | 1 022 | 317 | 1 339 |
| Unincorp. Whyalla | 0 | 0 | 0 | 0 | 0 | 0 | 0 | 0 | 0 |
| Pirie (SSD) | 12 | 0 | 12 | 1 211 | 0 | 280 | 1 490 | 670 | 2 161 |
| Northern Areas (DC) | 2 | 0 | 2 | 152 | 0 | 112 | 263 | 113 | 377 |
| Orroroo/Carrieton (DC) | 0 | 0 | 0 | 0 | 0 | 0 | 0 | 0 | 0 |
| Peterborough (DC) | 0 | 0 | 0 | 0 | 0 | 33 | 33 | 0 | 33 |
| Port Pirie C, Dists (M)—City | 8 | 0 | 8 | 859 | 0 | 100 | 959 | 557 | 1 516 |
| Port Pirie C, Dists (M) Bal | 2 | 0 | 2 | 200 | 0 | 35 | 235 | 0 | 235 |
| Unincorp. Pirie | 0 | 0 | 0 | 0 | 0 | 0 | 0 | 0 | 0 |
| Flinders Ranges (SSD) | 9 | 0 | 9 | 901 | 0 | 112 | 1 013 | 533 | 1 546 |
| Flinders Ranges (DC) | 2 | 0 | 2 | 206 | 0 | 25 | 231 | 0 | 231 |
| Mount Remarkable (DC) | 4 | 0 | 4 | 315 | 0 | 10 | 325 | 0 | 325 |
| Port Augusta (C) | 3 | 0 | 3 | 380 | 0 | 77 | 457 | 83 | 540 |
| Unincorp. Flinders Ranges | 0 | 0 | 0 | 0 | 0 | 0 | 0 | 450 | 450 |
| Far North (SSD) | 29 | 0 | 29 | 5 107 | 0 | 14 | 5 121 | 1 488 | 6 609 |
| Coober Pedy (DC) | 0 | 0 | 0 | 0 | 0 | 0 | 0 | 0 | 0 |
| Roxby Downs (M) | 1 | 0 | 1 | 67 | 0 | 14 | 81 | 0 | 81 |
| Unincorp. Far North | 28 | 0 | 28 | 5 040 | 0 | 0 | 5 040 | 1 488 | 6 528 |

(a) Includes conversions and dwelling units approved as part of alterations and additions or the construction of non-residential buildings.

(b) Refer to Explanatory Notes paragraph 16.

EXPLANATORY NOTES

INTRODUCTION

1 This publication presents monthly details of building work approved.

SCOPE AND COVERAGE

2 Statistics of building work approved are compiled from:

- permits issued by local government authorities and other principal certifying authorities;
- contracts let or day labour work authorised by Commonwealth, State, semi-government and local government authorities;
- major building approvals in areas not subject to normal administrative approval e.g. building on remote mine sites.

3 The scope of the survey comprises the following:

- construction of new buildings;
- alterations and additions to existing buildings;
- approved non-structural renovation and refurbishment work;
- approved installation of integral building fixtures.

4 From July 1990, the statistics include:

- all approved new residential building valued at \$10,000 or more;
- approved alterations and additions to residential building valued at \$10,000 or more;
- all approved non-residential building jobs valued at \$50,000 or more.

5 Excluded from the statistics is construction activity not defined as building (e.g. roads, bridges, railways, earthworks, etc.). Statistics for this activity can be found in *Engineering Construction Activity, Australia* (Cat. no. 8762.0).

VALUE DATA

6 Statistics on the value of building work approved are derived by aggregating the estimated 'value of building work done when completed' as reported on building approval documents provided to local councils or other building approval authorities. Conceptually these value data should exclude the value of land and landscaping but include site preparation costs. These estimates are usually a reliable indicator of the completed value of 'houses'. However, for 'other residential buildings' and 'non-residential buildings', they can differ significantly from the completed value of the building as final costs and contracts have not been established before council approval is sought and gained.

7 The ABS generally accepts values provided by approving bodies. Every effort is made to ensure data are provided on a consistent basis, however, there may be instances where value reported does not reflect the building completion value. For example, the reported value for most project homes is the contract price, which may include the cost of site preparation and landscaping. In other cases where a builder is contracted to construct a dwelling based on the owner's plans, the value may only be the builder's costs. Some councils do not use the value on approval documents, instead deriving a value based on floor area and type of structure.

8 From July 2000, value data includes the Goods and Services Tax (GST) for residential and non-residential building approvals. The ABS has consulted with councils and other approving authorities to ensure that approval values are reported inclusive of the GST. Where it was identified by a council or other approving authority that approvals submitted from its jurisdiction were on a GST-exclusive basis, the ABS has made adjustments to the data to ensure that values were consistent with other data collected and were inclusive of GST.

EXPLANATORY NOTES

OWNERSHIP

9 Building ownership is classified as either public or private sector and is based on the sector of intended owner of the completed building at the time of approval. Residential buildings constructed by private sector builders under government housing authority schemes are classified as public sector when the authority has contracted, or intends to contract, to purchase the building on or before completion.

BUILDING CLASSIFICATIONS

10 Building approvals are classified both by the Type of Building (e.g. 'house', 'factory') and by the Type of Work involved (e.g. 'new', 'alterations and additions' and 'conversions'). These classifications are often used in conjunction with each other in this publication and are defined in the Glossary.

11 The Type of Building classification refers to the intended major function of a building. A building which is ancillary to other buildings or forms a part of a group of related buildings is classified to the function of the specific building, not to the function of the group as a whole.

12 An example is the treatment of building work approved for a factory complex. For instance, a detached administration building would be classified to Offices, a detached cafeteria building to Shops, while the factory buildings would be classified to Factories.

13 An exception to this rule is the treatment of group accommodation buildings. For example, a student accommodation building on a university campus would be classified to Education.

14 In the case of a large multi-function building which, at the time of approval is intended to have more than one purpose (e.g. a hotel/shops/casino project), the ABS endeavours to split the approval details according to each main function.

15 Where this is not possible because separate details cannot be obtained, the building is classified to the predominant function of the building on the basis of the function which represents the highest proportion of the total value of the project.

16 The Type of Work classification refers to the building activity carried out. Conversion jobs are shown separately in tables 5 and 6. However, in other tables they are included within existing categories, as follows: in tables 1, 2, 11 and 12 they are included in the appropriate Type of Building category, and in tables 3, 4, 11 and 12 they are included in the 'Alterations and additions to residential buildings' category.

SEASONAL ADJUSTMENT

17 Seasonal adjustment is a means of removing the estimated effects of seasonal variation from the series so that the effects of other influences can be more clearly recognised.

18 In the seasonal adjustment of series, account has been taken of both normal seasonal factors and 'trading day' effects arising from the varying numbers of Sundays, Mondays, Tuesdays, etc. in the month. Adjustment has also been made for the influence of Easter which may affect the March and April estimates differently.

19 Seasonal adjustment does not remove from the series the effect of irregular or non-seasonal influences (e.g. the approval of large projects or a change in the administrative arrangements of approving authorities).

20 Some of the component series have been seasonally adjusted independently. Therefore, the adjusted components may not add to the adjusted totals.

EXPLANATORY NOTES

- SEASONAL ADJUSTMENT *continued* **21** As happens with all seasonally adjusted series, the seasonal factors are reviewed annually to take account of each additional year's data. The timing of this review may vary and when appropriate will be notified in the 'Data Notes' section of this publication.
- TREND ESTIMATES **22** Smoothing seasonally adjusted series reduces the impact of the irregular component of the seasonally adjusted series and creates trend estimates. For monthly series, these trend estimates are derived by applying a 13-term Henderson-weighted moving average to all months of the seasonally adjusted series except the last six months. Trend series are created for the last six months by applying surrogates of the Henderson moving average to the seasonally adjusted series. For further information, see *Information Paper: A Guide to Interpreting Time Series—Monitoring 'Trends': an Overview* (Cat. no. 1348.0) or contact the Assistant Director, Time Series Analysis on Canberra 02 6252 6076.
- 23** While the smoothing techniques described in paragraph 22 enable trend estimates to be produced for the latest few periods, they do result in revisions to the trend estimates as new data becomes available. Generally, revisions become smaller over time and, after three months, usually have a negligible impact on the series. Revisions to the original data and re-analysis of seasonal factors may also lead to revisions to the trend.
- CHAIN VOLUME MEASURES **24** The chain volume measures appearing in this publication are annually re-weighted chain Laspeyres indexes referenced to current price values in a chosen reference year. The reference year will be updated annually in the September publication. While current price estimates reflect both price and volume changes, chain volume estimates measure changes in value after the direct effects of price changes have been eliminated and therefore only reflect volume changes. The direct impact of the GST is a price change, and hence is removed from the chain volume estimates.
- 25** Further information on the nature and concepts of chain volume measures is contained in the ABS publication *Information paper: Introduction of Chain Volume Measures in the Australian National Accounts* (Cat. no. 5248.0).
- AUSTRALIAN STANDARD GEOGRAPHICAL CLASSIFICATION (ASGC) **26** Area statistics are now being classified to the *Australian Standard Geographical Classification (ASGC), 2001 Edition*, (Cat. no. 1216.0), effective from 1 July 2001, and ASGC terminology has been adopted in the presentation of building statistics.
- ABS DATA AVAILABLE ON REQUEST **27** As well as the statistics included in this and related publications, the ABS may have other relevant data available on request. Inquiries should be made to the National Information and Referral Service on 1300 135 070.
- RELATED PUBLICATIONS **28** Users may also wish to refer to the following publications:
- *Building Activity, Australia* (Cat. no. 8752.0)
 - *Building Activity, Australia: Dwelling Unit Commencements* (Cat. no. 8750.0)
 - *Building Activity, South Australia* (Cat. no. 8752.4)
 - *Building Approvals, Australia* (Cat. no. 8731.0)
 - *Construction Work Done, Australia, Preliminary* (Cat. no. 8755.0)
 - *Engineering Construction Activity, Australia* (Cat. no. 8762.0)
 - *House Price Indexes: Eight Capital Cities* (Cat. no. 6416.0)
 - *Housing Finance for Owner Occupation, Australia* (Cat. no. 5609.0)
 - *Producer Price Indexes, Australia* (Cat. no. 6427.0)

EXPLANATORY NOTES

29 While building approvals value series are shown inclusive of GST, this is different to the value series shown in the Building Activity publications (Cat. nos 8752.0, 8752.4 and 8755.0), in which residential work will be published inclusive of GST and non-residential work exclusive of GST. In the *Engineering Construction Activity, Australia* (Cat. no. 8762.0) all values will exclude GST.

ROUNDING

30 When figures have been rounded, discrepancies may occur between sums of the component items and totals.

SYMBOLS AND OTHER USAGES

n.a. not available
n.y.a. not yet available
C City
DC District Council
M Municipality
RC Rural City
SD Statistical Division
SSD Statistical Subdivision

G L O S S A R Y

| | |
|---|--|
| Alterations and additions | Building activity carried out on existing buildings. Includes adding to or diminishing floor area, altering the structural design of a building and affixing rigid components which are integral to the functioning of the building. |
| Alterations and additions to residential buildings | Alterations and additions carried out on existing residential buildings, which may result in the creation of new dwelling units. See also Explanatory Notes paragraph 16. |
| Building | A building is a rigid, fixed and permanent structure which has a roof. Its intended purpose is primarily to house people, plant, machinery, vehicles, goods or livestock. An integral feature of a building's design is the provision for regular access by persons in order to satisfy its intended use. |
| Conversion | Building activity which converts a non-residential building to a residential building, e.g. conversion of a warehouse to residential apartments. Conversion is considered to be a special type of alteration, and these jobs have been separately identified as such from the July 1996 reference month, though they have only appeared separately in this publication from the April 1998 issue. Prior to that issue, conversions were published as part of the 'Conversions, etc.' category or included elsewhere within a table. Prior to July 1996, Table 5 includes the number of Conversions in the 'Alterations and additions to residential buildings' category while Table 6 includes the value of Conversions in the 'Alterations and additions to residential buildings, creating dwellings' category. See also Explanatory Notes paragraph 16. |
| Dwelling unit | A dwelling unit is a self-contained suite of rooms, including cooking and bathing facilities and intended for long-term residential use. Regardless of whether they are self-contained or not, units within buildings offering institutional care (e.g. hospitals) or temporary accommodation (e.g. motels, hostels and holiday apartments) are not defined as dwelling units. Such units are included in the appropriate category of non-residential building approvals. Dwelling units can be created in one of four ways: through new work to create a residential building; through alteration/addition work to an existing residential building; through either new or alteration/addition work on non-residential building or through conversion of a non-residential building to a residential building. |
| Educational | Includes schools, colleges, kindergartens, libraries, museums and universities. |
| Entertainment and recreational | Includes clubs, cinemas, sport and recreation centres. |
| Factories | Includes paper mills, oil refinery buildings, brickworks and powerhouses. |
| Flats, units or apartments | Dwellings not having their own private grounds and usually sharing a common entrance, foyer or stairwell. |
| Health | Includes hospitals, nursing homes, surgeries, clinics and medical centres. |
| Hotels, motels and other short term accommodation | Includes hostels, boarding houses, guest houses, and holiday apartment buildings. |
| House | A house is a detached building primarily used for long term residential purposes. It consists of one dwelling unit. For instance, detached 'granny flats' and detached dwelling units (e.g. caretaker's residences) associated with a non-residential building are defined as houses. |

GLOSSARY

| | |
|---|---|
| Miscellaneous | Includes justice and defence buildings, welfare and charitable homes, prisons and reformatories, maintenance camps, farming and livestock buildings, veterinary clinics, child-minding centres, police stations and public toilets. |
| New building work | Building activity which will result in the creation of a building which previously did not exist. |
| New other residential buildings | Building activity which will result in the creation of a residential building other than a house, which previously did not exist. |
| New residential | Building activity which will result in the creation of any residential building (house or other residential) which previously did not exist. |
| Non-residential building | A non-residential building is primarily intended for purposes other than long term residential purposes. Note that, on occasions, one or more dwelling units may be created through non-residential building activity. Prior to the April 1998 issue of this publication, they have been included in the 'Conversions, etc.' column in tables showing dwelling units approved. They are now identified separately (e.g. see table 5). However, the value of these dwelling units cannot be separated out from that of the non-residential building which they are part of, therefore the value associated with these remain in the appropriate Non-residential category. |
| Offices | Includes banks, post offices and council chambers. |
| Other business premises | Includes warehouses, service stations, transport depots and terminals, electricity substation buildings, telephone exchanges, broadcasting and film studios. |
| Other dwellings | Includes all dwellings other than houses. They can be created by: the creation of new other residential buildings (e.g. flats); alteration/addition work to an existing residential building; either new or alteration/addition work on a non-residential building; conversion of a non-residential building to a residential building creating more than one dwelling unit. |
| Other residential building | An other residential building is a building other than a house primarily used for long-term residential purposes. An other residential building contains more than one dwelling unit. Other residential buildings are coded to the following categories: semi-detached, row or terrace house or townhouse with one storey; semi-detached, row or terrace house or townhouse with two or more storeys; flat, unit or apartment in a building of one or two storeys; flat, unit or apartment in a building of three storeys; flat, unit or apartment in a building of four or more storeys; flat, unit or apartment attached to a house; other/number of storeys unknown. The latter two categories are included with the semi-detached, row or terrace house or townhouse with one storey category in table 7 of this publication. |
| Religious | Includes convents, churches, temples, mosques, monasteries and noviciates. |
| Residential building | A residential building is a building consisting of one or more dwelling units. Residential buildings can be either houses or other residential buildings. |
| Semi-detached, row or terrace houses, townhouses | Dwellings having their own private grounds with no other dwellings above or below. |
| Shops | Includes retail shops, restaurants, taverns and shopping arcades. |

FOR MORE INFORMATION...

- INTERNET* **www.abs.gov.au** the ABS web site is the best place to start for access to summary data from our latest publications, information about the ABS, advice about upcoming releases, our catalogue, and Australia Now—a statistical profile.
- LIBRARY* A range of ABS publications is available from public and tertiary libraries Australia-wide. Contact your nearest library to determine whether it has the ABS statistics you require, or visit our web site for a list of libraries.
- CPI INFOLINE* For current and historical Consumer Price Index data, call 1902 981 074 (call cost 77c per minute).
- DIAL-A-STATISTIC* For the latest figures for National Accounts, Balance of Payments, Labour Force, Average Weekly Earnings, Estimated Resident Population and the Consumer Price Index call 1900 986 400 (call cost 77c per minute).

INFORMATION SERVICE

Data which have been published and can be provided within five minutes are free of charge. Our information consultants can also help you to access the full range of ABS information—ABS user-pays services can be tailored to your needs, time frame and budget. Publications may be purchased. Specialists are on hand to help you with analytical or methodological advice.

- PHONE* **1300 135 070**
- EMAIL* **client.services@abs.gov.au**
- FAX* 1300 135 211
- POST* Client Services, ABS, GPO Box 796, Sydney 1041

WHY NOT SUBSCRIBE?

ABS subscription services provide regular, convenient and prompt deliveries of ABS publications and products as they are released. Email delivery of monthly and quarterly publications is available.

- PHONE* 1300 366 323
- EMAIL* subscriptions@abs.gov.au
- FAX* 03 9615 7848
- POST* Subscription Services, ABS, GPO Box 2796Y, Melbourne 3001



2873140005024
ISSN 0810-4743

RRP \$20.00